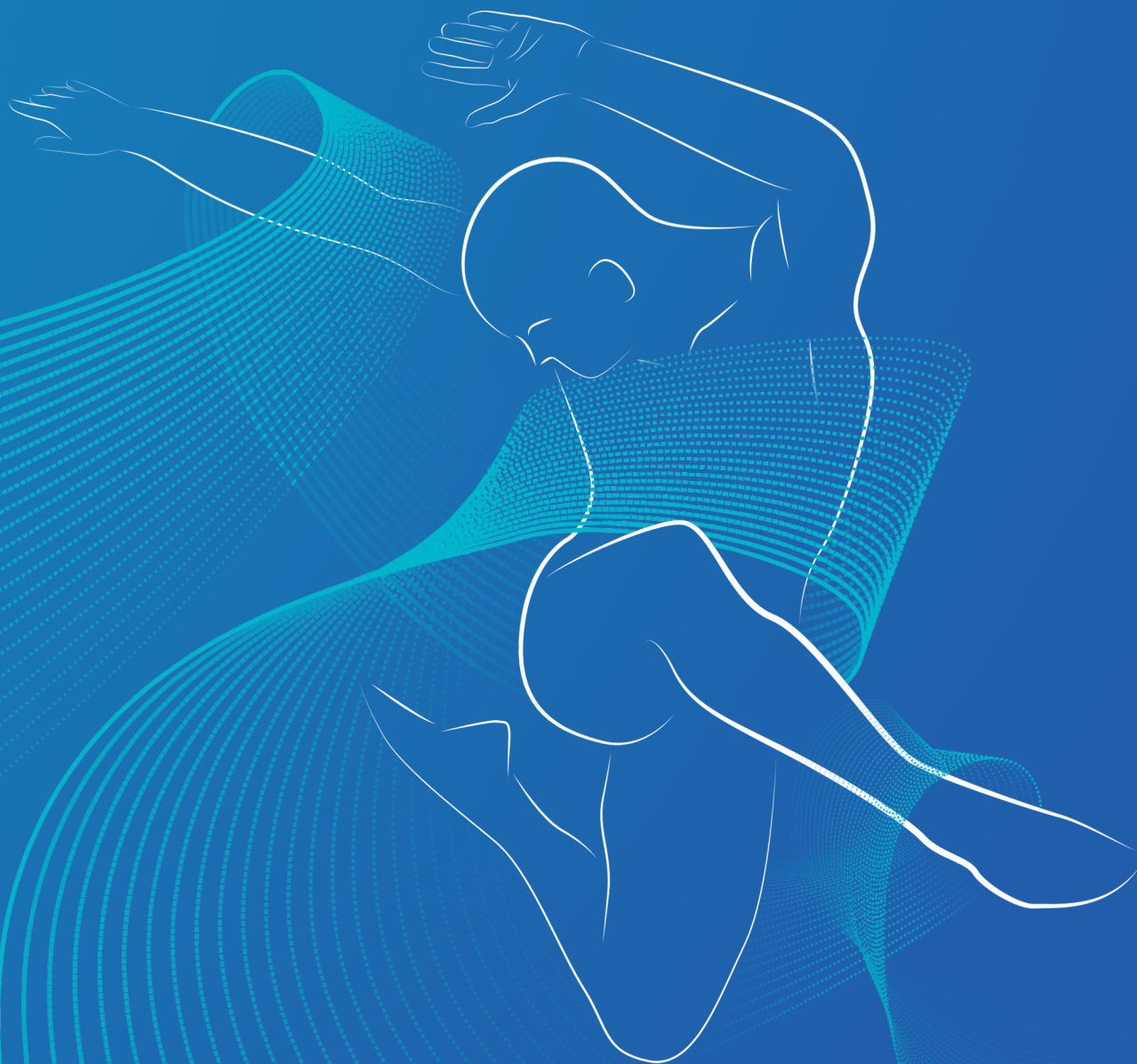




**THUASNE**



**UK  
2016**

**ORTHOPÆDICS**

*Wings for your health*

# EDITORIAL



We are proud to present the new range of medical devices designed by the Thuasne Group. We have developed a number of new patents, materials and designs.

More than ever, Thuasne offers patients with care and treatment solutions for all musculoskeletal problems of all origins.

The human body is subject to shocks on a daily basis and articulations are sometimes put under great stress (sprains, strains or fractures).

The ageing of the musculoskeletal system also exposes articulations to degenerative pathologies, such as osteoarthritis, leading to a drastic reduction of physical activity.

As well as this, Thuasne, as a dynamic company, always seeks to make the strategic shifts necessary to further its own development in an ever-changing environment.

Health and medical devices are at the dawn of a period of profound change, accelerated by digital technology:

- patients these days are an «active participant» in their own treatment and have become very much involved in their own healthcare;
- product design cycles are becoming increasingly short, especially with the use of biomechanical simulations;
- the arrival of connected medical devices reinforces treatment solutions, through the development of the product into a personalised service.

Thuasne's development is deeply involved in this transformation, it builds partnerships with new partners, especially start-up companies.

By accompanying the patient and giving them the means to become an active agent in their own health care, Thuasne takes up the challenge of the «qualified self», because healthcare cannot be reduced to a simple avalanche of numbers.

Through their innovative and technological medical solutions, used by patients, Thuasne presents itself as a #Medweartech pioneer. To support and protect articulations, **Thuasne's range of orthoses offers the correct solution for every situation, age and profile.**

Thuasne gives wings to your health.



Photos:  
Studio Caterin  
Jimmy Delpire  
Thuasne

Elizabeth Ducottet  
Managing Director

# A GLOBAL PRESENCE

THUASNE HAS BUILT UP A FLEXIBLE AND COMPETITIVE INTERNATIONAL INDUSTRIAL NETWORK, HINGED AROUND ITS SAINT ETIENNE SITE, THE COMPANY'S HISTORIC BASE FOR THE PAST 110 YEARS.



05.  
BACK  
& HIPS



23.  
NECK



27.  
SHOULDER



33.  
WRIST  
& ELBOW



41.  
KNEE



55.  
ANKLE



67.  
FOOT



75.  
JUNIOR  
RANGE

# BACK



Subject to constant physical stresses, our backs have to work 1,500 times per day on average during our various movements. This complex joint system consists of a set of very different anatomical structures, including vertebrae, discs, muscles, tendons, ligaments and nerves and damage to one or more of these components can cause low back pain.



## CONDITIONS

	Common low back pain					Postural and/or back pain problems	Pelvic and sacro-iliac pain	
	Common low back pain (acute phase)		Common low back pain (recurrence prevention)					
	Moderate activity, moderate pain	Intense activity, intense pain	Moderate activity, moderate pain	Intense activity, intense pain				
<b>LUMBAR SPINE</b>								
LombaSkin®	●							
LombaTech®	●	●						
Lombacross Activity®		●						
Lombax® Original			●					
Lombax Activity®				●				
Dynacross®	●							
Dynacross Activity®		●						
<b>DORSAL SPINE</b>								
Lombax® High						●		
Lombax Dorso®						●		
Lombax® Immo						●		
Dorso Rigid 35°®						●		
Osteo-Med Akut						●		
Osteo-Med						●		
<b>PREGNANT WOMEN</b>								
LombaMum®	●	●	●	●			●	
Ortel® P							●	

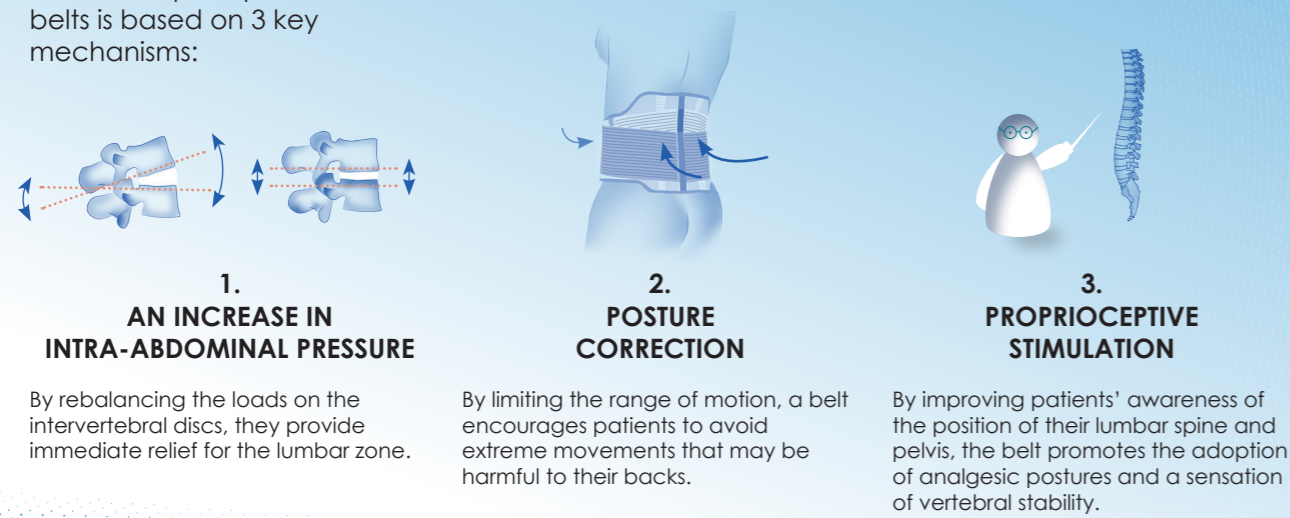
## CONDITIONS

	Non-displaced rib fractures	Following a colostomy	Weaknesses of the abdominal wall	Inguinal hernia	Hip dysplasia	Hip dislocations
<b>THORACO-ABDOMINAL BELTS</b>						
Cemen®	●					
Dynabell®	●		●			
Stomex®		●				
<b>TRUSS</b>						
Ortel®				●		
<b>HIP ORTHOSES</b>						
Hip-Med					●	●
Hiploc Evo						●

## ACTION PRINCIPLE

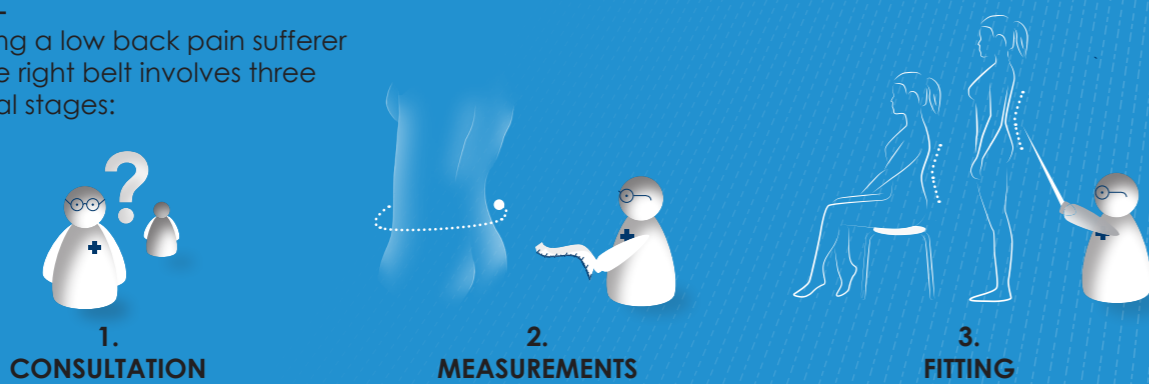
LUMBAR SUPPORT BELTS PROVIDE RELATIVE REST FOR THE LUMBAR SPINE. THEIR TECHNICAL CHARACTERISTICS DETERMINE THE DEGREE OF IMMOBILISATION.

The action principle of lumbar belts is based on 3 key mechanisms:



## HOW TO PROVIDE THE RIGHT LUMBAR BELT

Providing a low back pain sufferer with the right belt involves three essential stages:

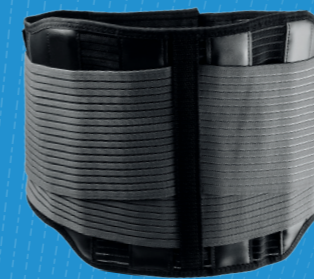


**The fitting must be performed by a healthcare professional.**

## CLINICAL STUDY

EFFICACY OF THE THUASNE LOMBACROSS ACTIVITY® BELT IN SUBACUTE LOW BACK PAIN<sup>1</sup>

**TV PROVEN!** Therapeutic Value



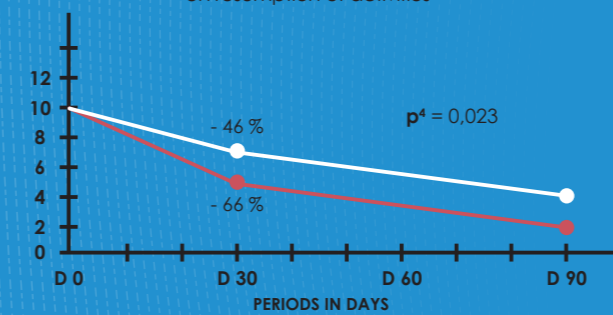
- > A faster and greater **reduction in pain intensity**.
- > Faster, more extensive **functional recovery**.
- > **Saving of €200** on treatment costs<sup>2</sup>.

**RANDOMISED STUDY<sup>3</sup>** (197 PATIENTS - 3 MONTHS)

- GROUP 1 (G1) :**  
102 patients with low back pain treated with Lombacross Activity® + medication.
- GROUP 2 (G2) :**  
95 patients with low back pain taking their usual treatment without a belt.

### Evolution in EIFEL\* score between D0 and D90

\*EIFEL score: Evaluation of the impact of low back pain on resumption of activities

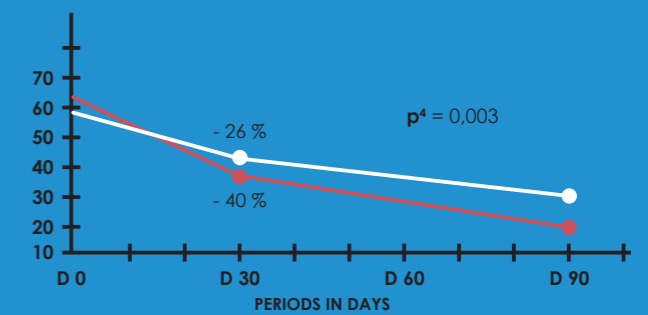


G1 (Lombacross Activity®) —●— G2 (control group) —●—

**Group with belt > Group with usual treatment:**  
**Statistically significant functional improvement** from the 1st month for the Group with belt, persisting at D90

### Evolution in VAS score\*\* between D0 and D90

\*\*VAS score: Visual Analogue Scale



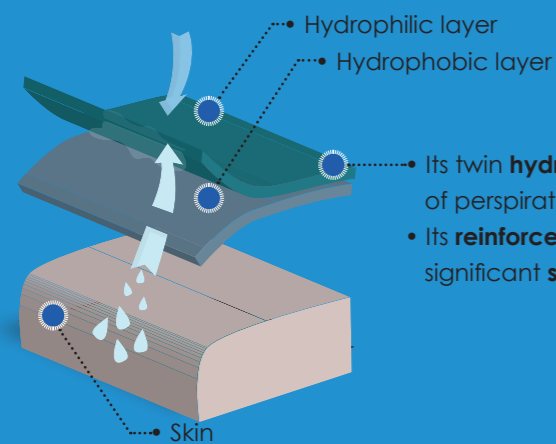
G1 (Lombacross Activity®) —●— G2 (control group) —●—

**Group with belt > Group with usual treatment:**  
**Statistically significant reduction in pain** from the 1st month for the Group with belt, persisting at D90

1. Caimels P et al. Effectiveness of a Lumbar Belt in Subacute Low Back Pain: An Open, Multicentric, and Randomized Clinical Study. Spine. 2009 ; 34(3) : 215-220.  
2. Compared with the estimated cost of treatment in the control group.  
3. Study published in «spine», can be consulted in full on <http://journals.lww.com/spinejournal>.  
4. The minimum significance value for p is 0.05. The lower the p value, the better the significance of the study result.

# COMBITEX® FABRIC: IMPROVED COMFORT FOR THE PATIENT

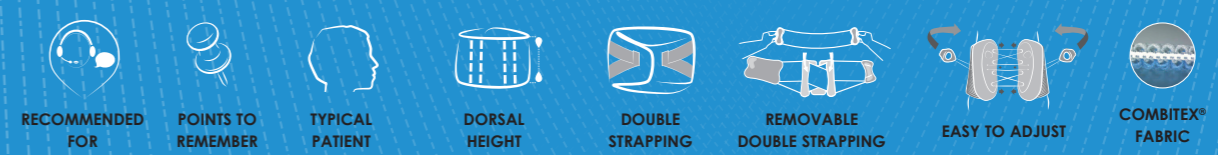
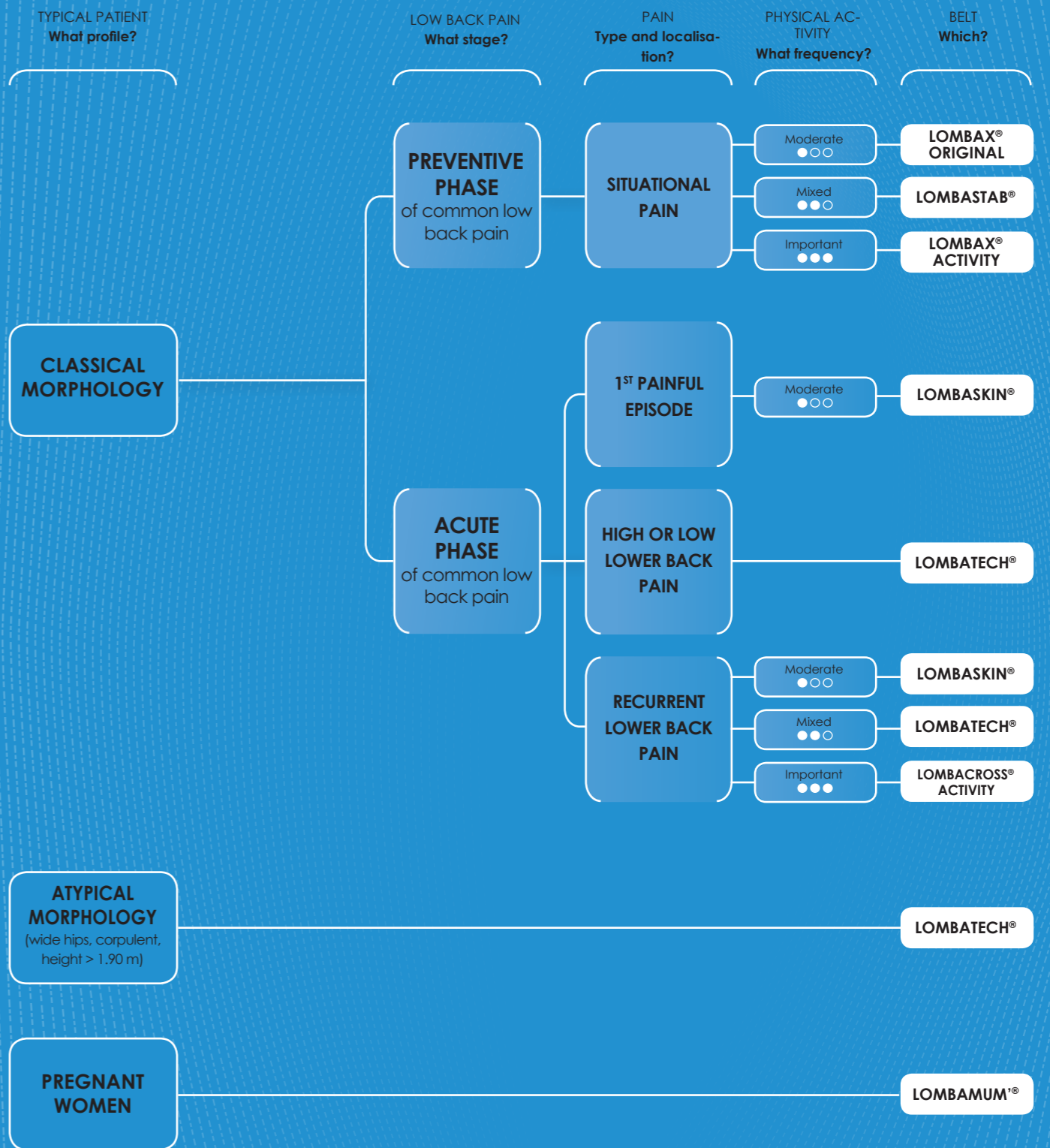
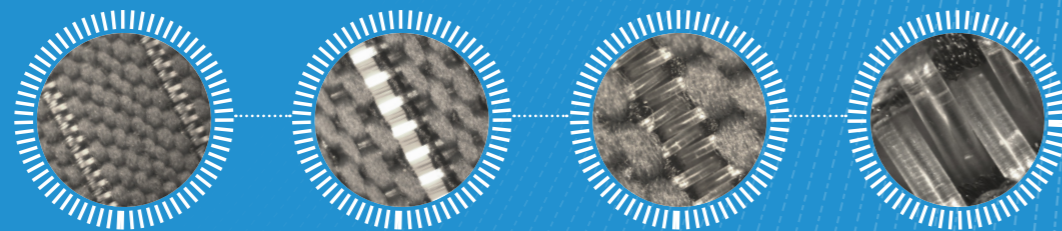
Combitex® is a **unique high-tech fabric** by Thuasne. It improves comfort and encourages treatment compliance:



- Its twin **hydrophobic / hydrophilic layer structure** encourages circulation of perspiration, for constant wearing **even directly over the skin**.
- Its **reinforcement** and beveled edge finishing gives it **refinement** and significant **softness**.

## MACROPHOTOGRAPHY OF COMBITEX®

Increasing close-ups



The lumbar spine "Essentials"

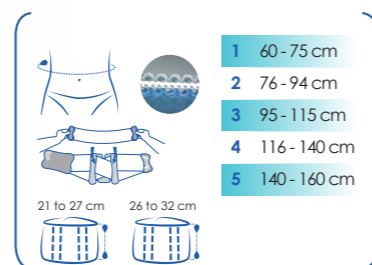


**LombaTech®**

0852 02 (21 cm) - 0851 03 (26 cm)

The lumbar belt that adapts to all body shapes

- RECOMMENDED FOR**
  - Common low back pain in the acute phase affecting the high or low lumbar region, with moderate to intense pain
- POINTS TO REMEMBER**
  - Precise targeting of pain**, thanks to the additional removable strap
  - Can be worn next to the skin all day long**, thanks to the Combitec® and Coolmax® fabrics
  - Optimised fit for all body shapes**, thanks to the patented adjustable back
  - Available in waist size **160 cm**
- TYPICAL PATIENT**
  - Patient with a heavy build suffering from low back pain
  - Women with large hips
  - Low back pain with mixed physical activity



Find out more



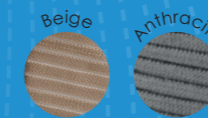
The lumbar spine "Essentials"

**LombaSkin®**

0871 02 (21 cm) - 0870 02 (26 cm)

A discreet, lightweight lumbar belt

- RECOMMENDED FOR**
  - Common low back pain in the acute phase with moderate pain
- POINTS TO REMEMBER**
  - A second skin effect**, thanks to a seamless design
  - Can be worn next to the skin all day long**, thanks to the Combitec® fabric
- TYPICAL PATIENT**
  - Low back pain sufferer with moderate physical activity, eg: sedentary office worker



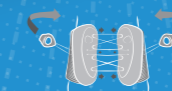
**NEW**

**LombaStab®**

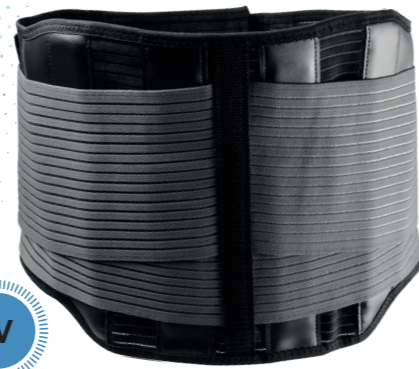
0854 01 (21 cm)  
0853 01 (26 cm)

The lumbar belt that adjusts with precision throughout the day

- RECOMMENDED FOR**
  - Common low back pain in acute phase with moderate to intense lumbar pain
  - Recurrent low back pain
- POINTS TO REMEMBER**
  - Even compression and simplified adjustment** thanks to its **easy attachment system (Quick Lacing System)**
  - Enhanced stability** thanks to the elastic properties of the fabric
  - Constant ease and freedom of movement** thanks to its anatomical design with **curved hips and inset abdominal plastron**
- TYPICAL PATIENT**
  - Low back pain sufferer with mixed to significant physical activity, e.g.: mobile or physical professions



The lumbar spine "Essentials"



TV

**Lombacross Activity®**

0836 01 (21 cm) - 0835 03 (26 cm)

A lumbar belt offering reinforced support

- RECOMMENDED FOR**
  - Common low back pain in the acute phase with intense lumbar pain
- POINTS TO REMEMBER**
  - Support adapted to pain**, thanks to the additional reinforced strap
  - Wearer comfort**, thanks to the anatomical cuts to free the hips and ribs
  - Can be worn next to the skin all day long**, thanks to the Combitec® fabric
- TYPICAL PATIENT**
  - Low back pain and high level of physical activity, for example an order picker

1	52 - 62 cm
2	63 - 74 cm
3	75 - 89 cm
4	90 - 105 cm
5	106 - 120 cm
6	121 - 140 cm

White    beige    black

(Available to order)

The lumbar spine "Essentials"



**Lombax® Original**

0824 03

The reference belt for occasional use

- RECOMMENDED FOR**
  - Treating recurrent conditions during daily activities which put pressure on the lower back
- POINTS TO REMEMBER**
  - High elastic compression and strength** thanks to the Lombax® fabric
  - Easy to put on** thanks to the two part closure
  - Increased comfort and breathability** thanks to the 3D weave dorsal plastron
- TYPICAL PATIENT**
  - Osteoarthritis patient with risk of low back pain, e.g.: active aged person

1	60 - 85 cm
2	86 - 112 cm
3	113 - 140 cm

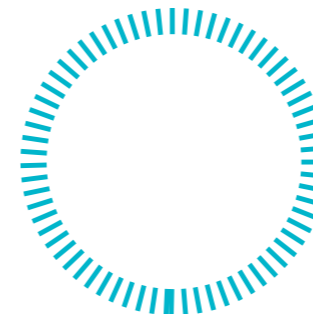
The lumbar spine "Alternatives"



**Lombax Activity®**

0850 02

- RECOMMENDED FOR**
  - Treating recurrent conditions during professional activities which put pressure on the lumbar region
- POINTS TO REMEMBER**
  - Ideal support for use during physical effort** thanks to its additional strengthened strap
  - High elastic compression and strength** from the Lombax® fabric
  - Practical to use** in a professional environment thanks to its removable shoulder straps
- TYPICAL PATIENT**
  - Labourer, farmer, removals agent



1	76 - 90 cm
2	91 - 110 cm
3	111 - 125 cm

The lumbar spine  
"Alternatives"

The lumbar spine  
"Alternatives"



**Lombacross®**

0830 05

- **Functional muscular simulation** at the rear thanks to its crossed elasticated bands
- **Can be worn next to the skin all day long** thanks to the CombiteX® fabric
- **Anatomical cut** to free up the hips and the ribs
- **Increased dorsal comfort** with its velvet-foam combination

**Dynacross®**

**Activity** 7685 01

- **Reinforced lumbar-abdominal support belt**
- **Flexible support** thanks to its flexible posterior reinforcement
- **Functional muscular simulation** at the rear thanks to its crossed elasticated bands
- **Ideal support for use during physical effort** thanks to its additional strengthened strap
- **Can be worn next to the skin all day long** thanks to the CombiteX® fabric

**Dynacross®**

7680 05

- **Lumbar-abdominal support belt**
- **Flexible support** thanks to its flexible posterior reinforcement
- **Functional muscular simulation** at the rear thanks to its crossed elasticated bands
- **Can be worn next to the skin all day long** thanks to the CombiteX® fabric

1	52 - 62 cm
2	63 - 74 cm
3	75 - 89 cm
4	90 - 105 cm
5	106 - 120 cm
6	121 - 140 cm

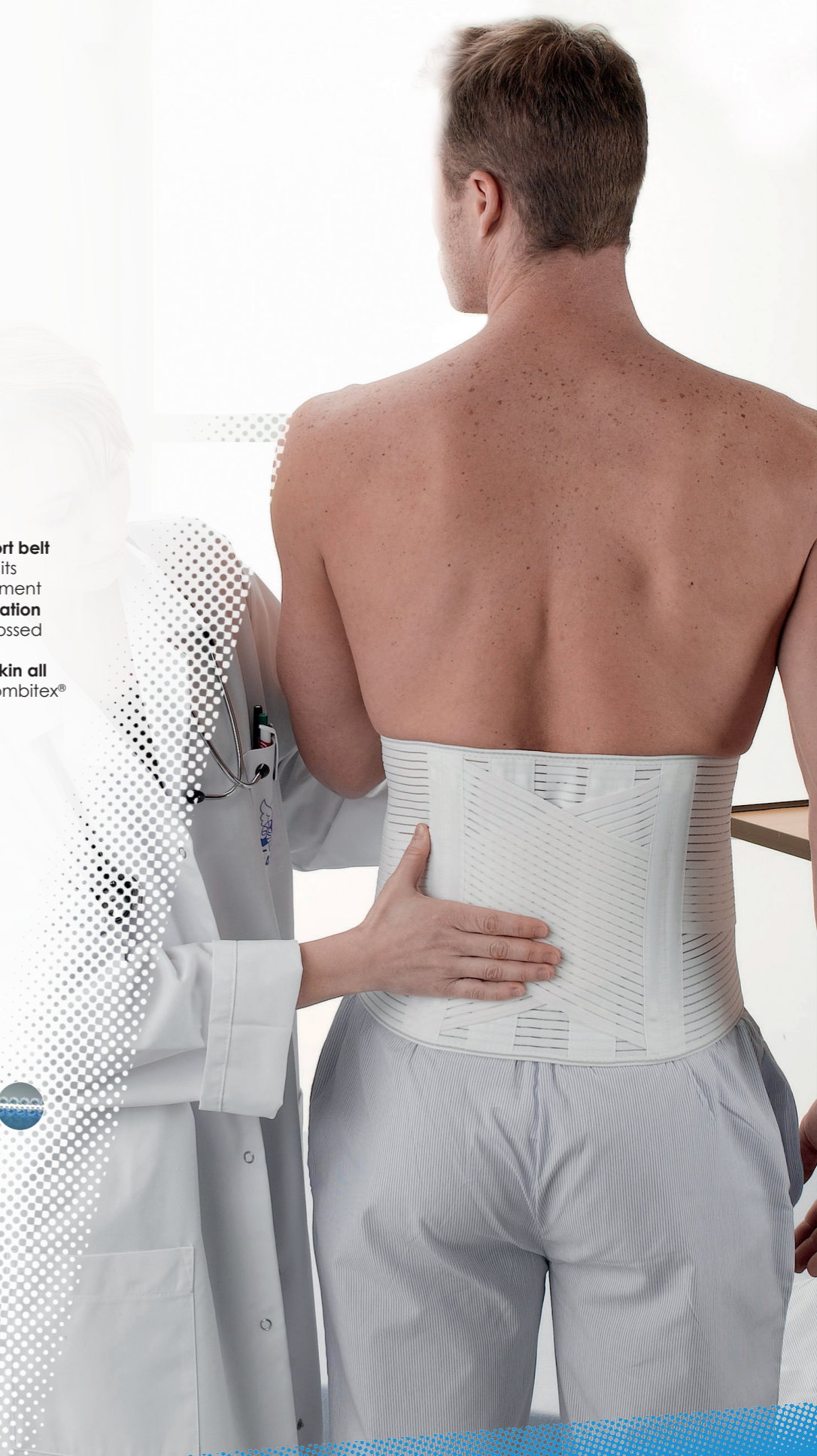
26 cm

1	52 - 62 cm
2	63 - 74 cm
3	75 - 89 cm
4	90 - 105 cm
5	106 - 120 cm
6	121 - 140 cm

26 cm

1	52 - 62 cm
2	63 - 74 cm
3	75 - 89 cm
4	90 - 105 cm
5	106 - 120 cm
6	121 - 140 cm

26 cm





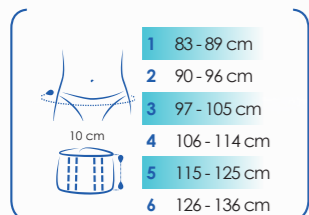
# BELTS



## Ortel® P

2740 01

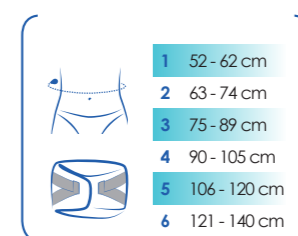
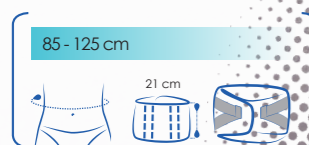
- **Pelvic belt** for pelvic support in cases of sacro-iliac or symphyseal instability pains
- **Extra-strong support** thanks to its elasticated fabric
- **Adjustable support** thanks to its additional tightening strap
- **Wearer comfort** thanks to the extra-soft terry lining



## LombaMum®

0805 01

- **Maternity lumbar belt**, for low back, pelvic and sacro-iliac pain in pregnant women
- **Adjustable support** thanks to the additional straps
- **Size adjustable to stage of pregnancy**, thanks to the 2 abdominal support bands
- **Wearer comfort**, thanks to the bamboo fibre lining



## Lombax Dorso®

0845 02

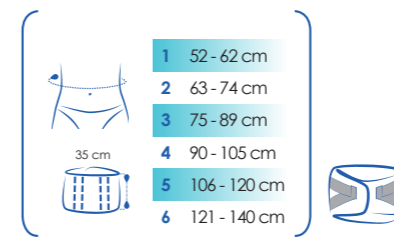
- **Posture-correcting dorsal-lumbar corset**
- **Effective adjustment to the subject's morphology** thanks to the back support section that adapts to the spinal curve with adjustable height
- **Adjustable tightening** thanks to its additional rear-front related straps
- **High elastic compression** thanks to the Lombax® fabric
- **Easy to fit** thanks to the "backpack"-style straps
- **Easy to wear** thanks to the sub-axillary cushioning



## Lombax® Immo

0846 01

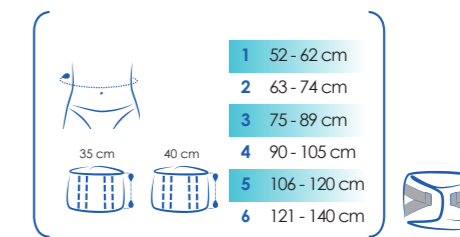
- **Dorsal-lumbar support** thanks to its 35 cm dorsal height
- **Adjustable tightening** thanks to its additional rear-front related straps
- **High elastic compression** thanks to the Lombax® fabric
- **Easy to put on** thanks to the two part rear closure
- **Removable rigid dorsal corset**



## Lombax® High

0843 03

- **Dorsal-lumbar support** thanks to its 35 cm to 40 cm dorsal height
- **Adjustable tightening** thanks to its additional rear-front related straps
- **High elastic compression** thanks to the Lombax® fabric
- **Easy to put on** thanks to the two part rear closure





**BOA SI Belt** U50201

The BOA SI provides support for the Sacro-iliac joint. Excellent adjunct to post-injection pain following an S.I. procedure. Reduces pain and swelling for strained lax Sacro-iliac ligaments.

Waist circumference

<b>S</b>	64 - 89 cm
<b>M</b>	89 - 114 cm
<b>L</b>	114 - 139 cm



**BOA Low Profile** U50101

The BOA Low Profile brace provides rigid anterior and posterior compression. The 8" model will accommodate most patients.

Waist circumference

<b>XS</b>	51 - 64 cm
<b>S</b>	64 - 76 cm
<b>M</b>	76 - 89 cm
<b>L</b>	89 - 101 cm
<b>XL</b>	101 - 114 cm
<b>XXL</b>	114 - 127 cm
<b>XXXL</b>	127 - 139 cm



**BOA w/Chairback** U50102

The BOA with Chairback combines the BOA Low Profile brace (pictured above), with a rigid chairback frame to provide spinal support from T9 - S1.

Waist circumference

<b>XS</b>	51 - 64 cm
<b>S</b>	64 - 76 cm
<b>M</b>	76 - 89 cm
<b>L</b>	89 - 101 cm
<b>XL</b>	101 - 114 cm
<b>XXL</b>	114 - 127 cm
<b>XXXL</b>	127 - 139 cm



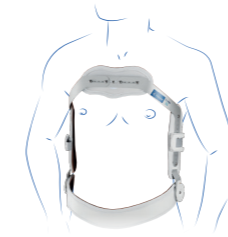
**BOA TLSO** U50301

The BOA with Chairback combines the BOA Low Profile brace (pictured above), with a rigid chairback frame to provide spinal support from T9 - S1.

Waist circumference

<b>S</b>	64 - 76 cm
<b>M</b>	76 - 89 cm
<b>L</b>	89 - 101 cm
<b>XL</b>	101 - 114 cm
<b>XXL</b>	114 - 127 cm

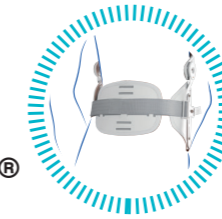
The dorsal spine "Specials"



**Dorso Rigid 35®**

0890 01

- Immobilising spinal hyper-extension corset
- Resting and static posture correction of the spine due to a stabilising and immobilising action, based on three pressure points.
- Fast, ergonomic fitting
- Water-resistant



	Pelvis circumference	Pubic symphysis to sternum height
<b>S</b>	60 - 75 cm	32 cm
<b>MS</b>	75 - 90 cm	32 cm
<b>M</b>	75 - 90 cm	35 cm
<b>LS</b>	90 - 105 cm	35 cm
<b>L</b>	90 - 105 cm	38 cm
<b>XL</b>	105 - 115 cm	41 cm



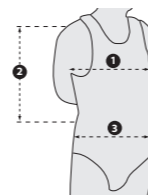
**Osteo-Med Akut** T548802

- Osteoporosis brace to relieve and correct the lumbar/thoracic spine
- Fits the patient's shape perfectly
- Adjustable back straightener that can be adapted to the patient's lordosis
- Ergonomic hand loop
- Additional adjustable straps that can be cut to size

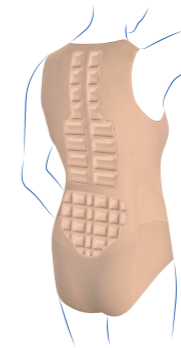
Single size

**MEN**  
**T54875** : Model without air pads  
**T548711** : Belt  
**T548721** : Vest  
**T375011** : Set of air pad inserts

Size of body	Chest circumference (cm) -1-	Back height (cm) -2-	Waist circumference (cm) -3-
<b>46</b>	90 - 93	38 - 45	80 - 90
<b>48</b>	94 - 97	39 - 46	80 - 90
<b>50</b>	98 - 101	40 - 47	90 - 100
<b>52</b>	102 - 105	41 - 48	90 - 100
<b>54</b>	103 - 109	41 - 48	100 - 110
<b>56</b>	110 - 113	42 - 49	100 - 110
<b>58</b>	114 - 117	42 - 49	110 - 120
<b>60</b>	118 - 121	43 - 50	110 - 120



**Osteo-Med**



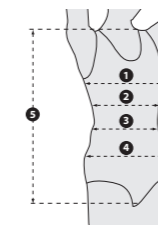
- Women T548501 Body for osteoporosis**
- Men T548701 Men's vest for bone demineralisation**
- Neuromuscular reflex straightening of the spine to rebalance the centre of gravity
- Alleviation of pain due to "gate control" mechanisms
- Three air pad inserts for the thoracic and lumbar spine
- Additional straps for intra-abdominal compression
- Invisible under clothes
- Gusset at the crotch, with optional velcro fastening (**Women**)
- Made up of 2 parts: a vest and a belt (**Men**)

**WOMEN**

All the sizes can be supplied in 3 heights and made-to-measure:  
 K = short, approximately 65 cm  
 N = normal length, approximately 67.5 cm (standard version)  
 L = long, approximately 70 cm  
 S = made-to-measure

**T548551**: Model without air pads  
**T375001**: Set of air pad inserts  
**T548501**: Made-to-measure  
**T548501 I**: Cup sizes AA, A and B Standard sizes 36 - 54  
**T548501 II**: Cup sizes C, D and E Standard sizes 38 - 54

Size of body	Model	Cup sizes	Bust circumference (cm) -1-	Circumference under bust (cm) -2-	Waist circumference (cm) -3-	Hip circumference (cm) -4-	Bust height (cm) -5-
<b>36</b>	I	AA - B	75 - 79	67 - 71	60 - 67	85 - 92	K = 61 - 64
<b>38</b>	I	AA - B	80 - 84	71 - 75	66 - 73	89 - 96	K = 62 - 65 N = 64 - 68 L = 68 - 72
<b>38</b>	II	C - E	84 - 92				
<b>40</b>	I	AA - B	85 - 91	78 - 79	72 - 79	93 - 100	K = 62 - 65 N = 65 - 69 L = 69 - 73
<b>40</b>	II	C - E	91 - 97				
<b>42</b>	I	AA - B	90 - 96	79 - 83	78 - 85	97 - 104	K = 63 - 66 N = 66 - 70 L = 70 - 74
<b>42</b>	II	C - E	96 - 102				
<b>44</b>	I	AA - B	95 - 101	83 - 87	84 - 91	101 - 108	K = 64 - 67 N = 67 - 71 L = 71 - 75
<b>44</b>	II	C - E	101 - 107				
<b>46</b>	I	AA - B	100 - 106	87 - 92	90 - 97	105 - 113	K = 65 - 68 N = 68 - 72 L = 72 - 76
<b>46</b>	II	C - E	106 - 112				
<b>48</b>	I	AA - B	105 - 111	92 - 97	96 - 103	109 - 117	K = 65 - 68 N = 68 - 72 L = 72 - 76
<b>48</b>	II	C - E	111 - 117				
<b>50</b>	I	AA - B	110 - 116	97 - 102	102 - 109	113 - 121	K = 66 - 70 N = 70 - 74 L = 74 - 78
<b>50</b>	II	C - E	116 - 122				
<b>52</b>	I	AA - B	115 - 121	102 - 107	108 - 115	117 - 125	K = 67 - 72 N = 72 - 76 L = 76 - 80
<b>52</b>	II	C - E	121 - 127				
<b>54</b>	I	AA - B	120 - 126	107 - 112	114 - 121	121 - 129	K = 67 - 72 N = 72 - 76 L = 76 - 80
<b>54</b>	II	C - E	126 - 132				



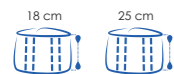
# BELTS



## Cemen®

- 2800 01
- Thoracic bandage belt for fractured ribs
  - High support elastic fabric
  - Velcro closure

S	18 cm x 1,25 m
M	25 cm x 1,25 m
L	18 cm x 2,50 m
XL	25 cm x 2,50 m



## Dynabelt®

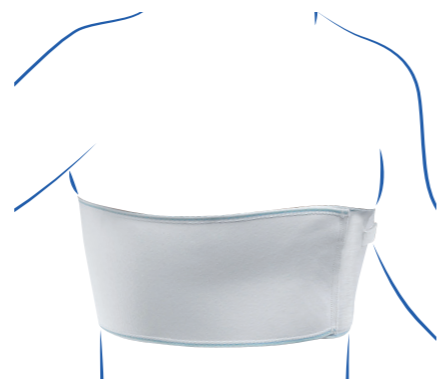
- 7010 07 (16 cm) - 7010 08 (26 cm) - 7010 09 (33 cm)
- Thoracic or abdominal support belt
  - Can be worn next to the skin all day long thanks to the Combitec® fabric
  - Removable support reinforcements
  - Can be sterilised in an autoclave

1	66 - 80 cm
2	81 - 90 cm
3	91 - 100 cm
4	101 - 120 cm
5	121 - 140 cm
6*	141 - 160 cm



\* only for the 33 cm belt

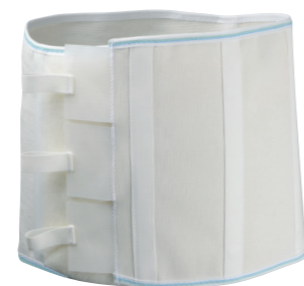
### Thoracic-abdominal belts



## Cemen®

- 2900 01
- Thoracic belt
  - Resistant elastic fabric for thoracic support
- Models: men - women

1	60 - 75 cm
2	76 - 90 cm
3	91 - 105 cm
4	106 - 120 cm



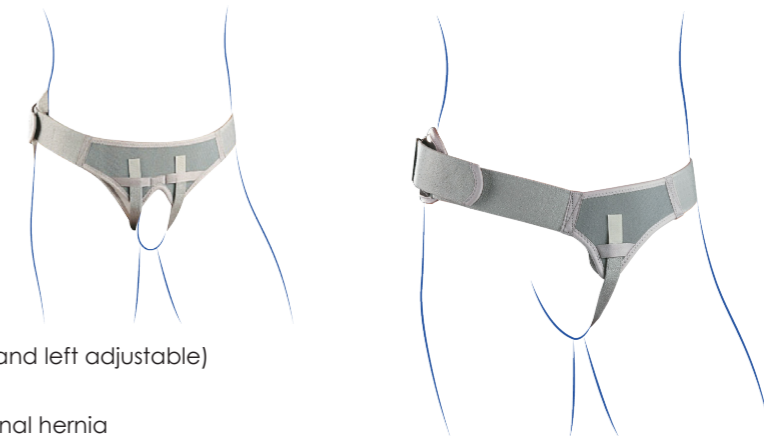
## Stomex®

- 2700 02
- Abdominal support belt for stoma patients
  - Front zone in ladder-proof fabric, allows drains and colostomy bags to be passed through

1	60 - 70 cm
2	71 - 85 cm
3	86 - 100 cm
4	101 - 120 cm



### Truss



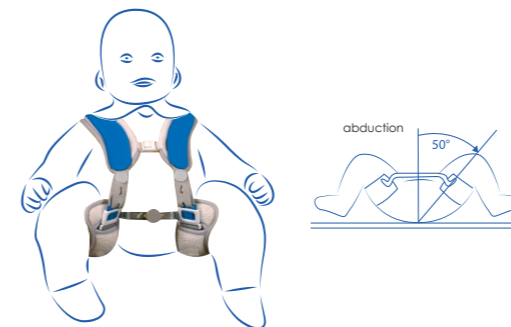
## Ortel®

- 2730 01: unilateral (right and left adjustable)  
2720 01: bilateral

- Truss for reducible inguinal hernia
- Right/left adjustment thanks to its unique buckle system
- Comfort and effectiveness thanks to its removable and repositionable silicon pads
- Available in unilateral and bilateral versions

1	75 - 85 cm
2	86 - 97 cm
3	98 - 110 cm
4	111 - 125 cm

### Hip orthoses



## Hip-Med T515501

- Treatment of hip dysplasia and dislocation in newborn babies and infants
- Lower limb resting position at between 90° and 100°
- Possibility of continuous adjustment
- Does not disrupt the blood circulation
- Removable washable lining around the neck for better contact
- Leg shells with removable, washable covers
- Tool-free adjustment of leg spread



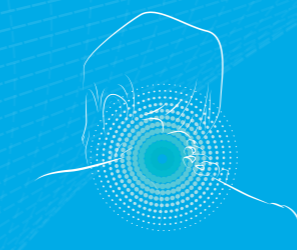
## Hiploc Evo T540502

- Reliable prevention of dislocations without impeding day-to-day movements
  - Guiding of hip due to an integrated splint at the pelvis and knee
  - Possibility of limiting flexion and extension movements
- 2 versions: left or right

	Thigh shell spread	Thigh circumference
XXS premature babies	11,5 - 14 cm	12 - 16 cm
XS newborn babies	13 - 16 cm	12 - 16 cm
S a few weeks	13 - 18 cm	15 - 18 cm
M a few months	14,5 - 20,5 cm	17 - 22 cm
L several months	20 - 27 cm	20 - 25 cm

Single size	80 - 140 cm
-------------	-------------

# NECK



The neck is made up of 7 vertebrae forming the cervical spine. It plays the mechanical role of supporting the head. Crossed by the spinal cord - the body's sensory-motor command centre - it is a highly sensitive zone. The main neck problems are related to injury (sprain, torticollis) or degenerative conditions (arthritis).

## ACTION PRINCIPLE

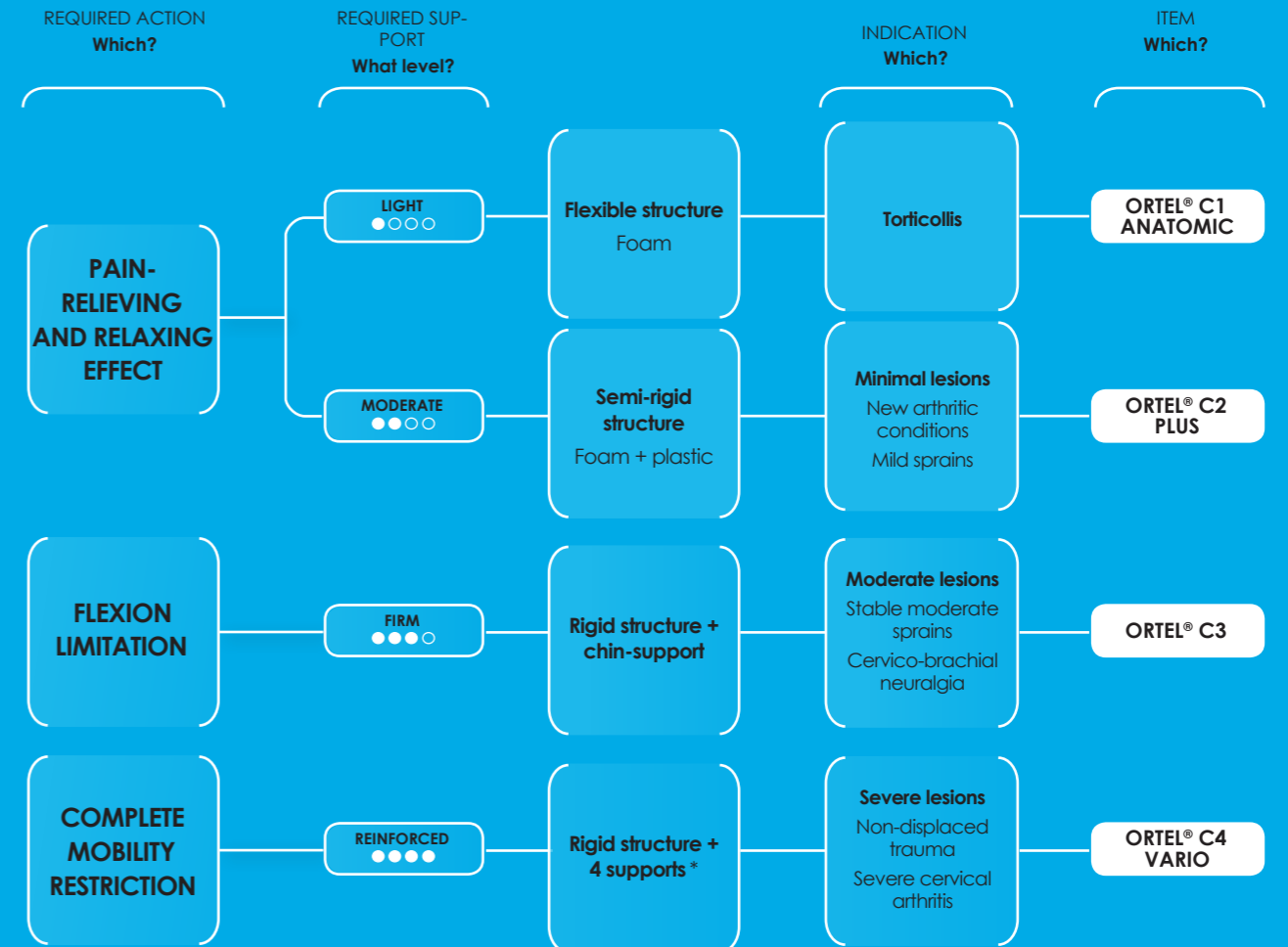
Cervical collars **immobilise the cervical spine**, limiting flexion, extension and rotation movements. The degree of immobilisation varies depending on the rigidity of the collar.

They also play a **proprioceptive role**, reinforcing sensations from the cervical spine, as well as an **analgesic role** due to their thermal action combined with immobilisation.



### CONDITIONS

CERVICAL COLLARS	Torticollis	Cervical arthritis	Cervico-brachial neuralgia	Mild sprain	Moderate sprain	Severe sprain	Non-displaced fracture
Ortel® C1 Classic	●						
Ortel® C1 Anatomic	●						
Ortel® C2 Plus	●	●	●	●			
PDC	●	●	●	●			
Ortel® C3			●		●		
Ortel® C4 Rigid						●	●
Ortel® C4 Vario		●				●	●



\* Chin, sternal, occipital and dorsal supports

Flexible collars



Ortel® C1 Classic

2393 02

- **Analgesic support** for the cervical spine thanks to **high quality foam and precise Velcro fitting**
- **Removable and washable** comfortable cover
- Recommended for use during short periods

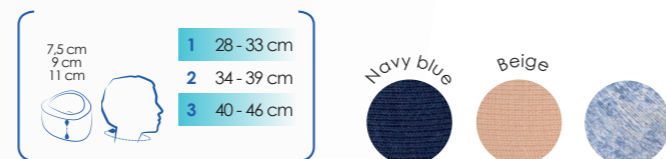


Ortel® C1 Anatomic

2394 02

- **Analgesic support** for the cervical spine thanks to its **compact support foam** (moderate density)
- **Anatomical shape** with rounded edges
- Removable and washable comfortable cover
- Precise Velcro fitting

Exists in a junior version



Semi-rigid collars



Ortel® C2 Plus 2392 04

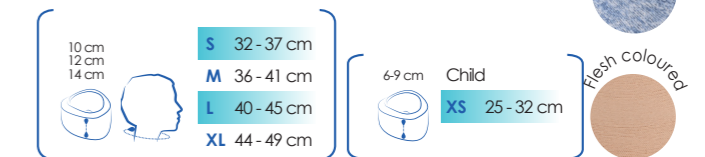
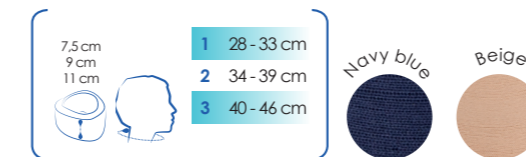
- **Analgesic support** for the cervical spine thanks to a **semi-rigid internal structure** covered in compact supporting foam (high density)
- **Anatomical shape** with rounded edges
- Removable and washable comfortable cover
- Precise adjustment using velcro tabs



PDC T492111

- **Neck-brace for total or partial immobilisation**
- **Anatomical shape** with rounded edges
- **Immobilisation** or **left or right unilateral immobilisation**
- Can be used for **dynamic flexion therapy**

Exists in a junior version

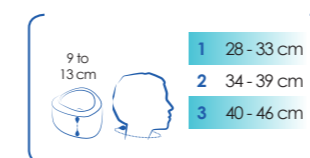


Rigid collars



Ortel® C3 2391 02

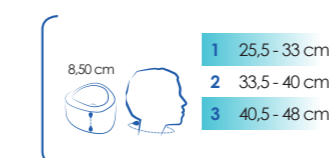
- **Reinforced support** of the cervical spine through its **rigid perforated polyethylene structure**
- **Padding of the edges** in contact with the skin and perforations for better aeration and comfort
- **Adjustable height** from 9 to 13 cm, **precise and quick morphological Velcro adjustment**
- X-ray transparent



Ortel® C4 Rigid

2396 03

- **Rigid collar with 4 supports**
- **Firm support** for the cervical spine thanks to its 2 rigid anatomically moulded shells in hypo-allergenic polyethylene foam
- The front shell provides sternal and chin support, the rear shell provides occipital and dorsal support
- Tracheal opening
- X-ray transparent



Ortel® C4 Vario

T492801

- **Rigid collar with 4 height-adjustable supports**
- **Reinforced support** for the cervical spine thanks to 2 rigid shells. The occipital, chin, sternal and dorsal supports enable total immobilisation
- **Height adjustable** from 9 to 16 cm for an **anatomical fit and modular immobilisation** (with adjustment of flexion)
- Comfort guaranteed by the removable and washable foam inserts
- Tracheal opening
- Radio-transparent



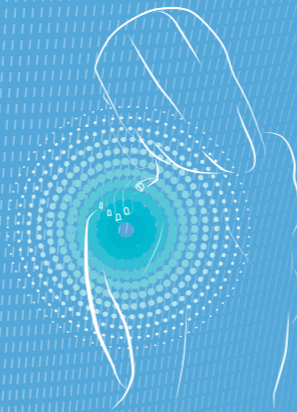
## ACTION PRINCIPLE

Thuasne shoulder braces use the Dujarrier principle. They immobilise the arm "elbow to body": with the arm at 90° to the fore-arm.

Immobilisation has an **analgesic and protective effect** and allows the injury to heal.

# SHOULDER

The shoulder is a complex structure made up of 2 joints (the glenohumeral joint and the acromioclavicular joint) and 4 muscles (converging to form the rotator cuff). Shoulder problems, caused by injury or wear and tear, can affect the joints, tendons or nerves.



### CONDITIONS

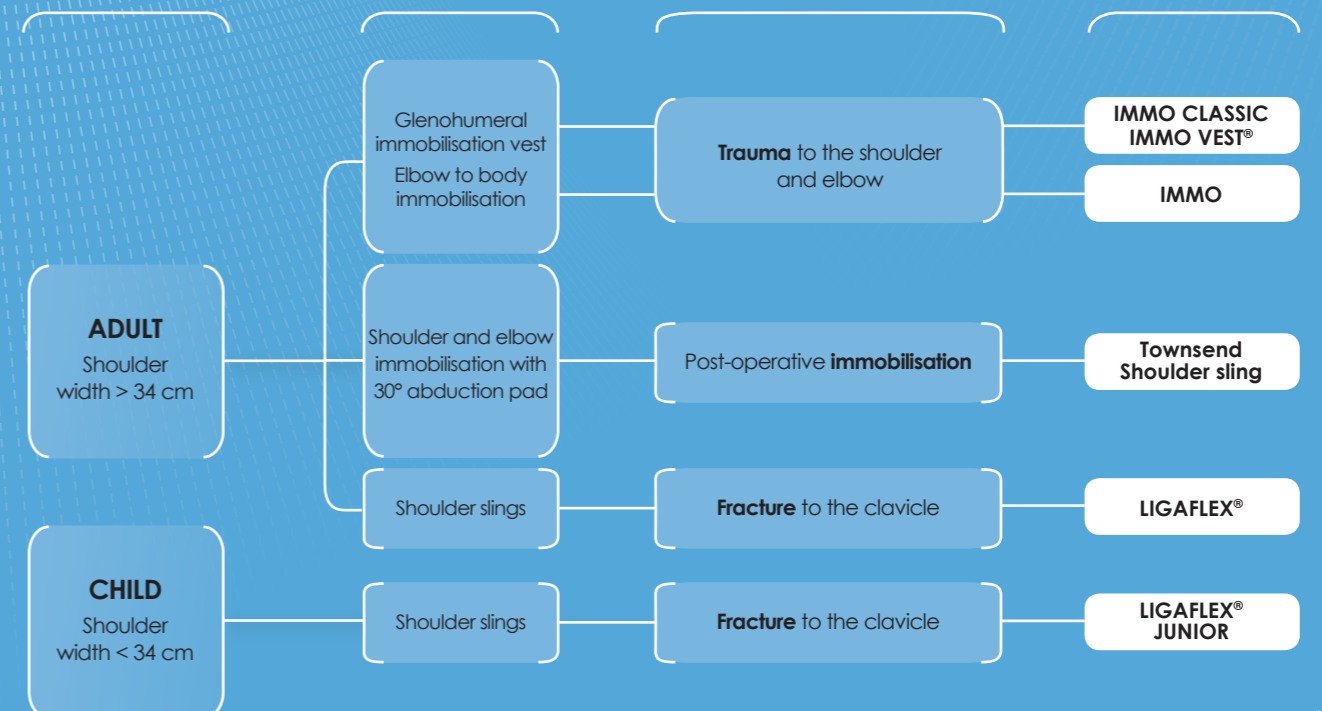
	TRAUMA				ARTICULATION PATHOLOGIES			POST-OPERATIVE
	Humerus head fracture	Scapula fracture	Clavicle fracture	Elbow trauma	Acromioclavicular dislocation	Glenohumeral dislocation	Rotator cuff injury without surgery	Post-operative immobilisation
<b>IMMOBILISATION VESTS</b>								
<b>Immo Classic</b>	●	●		●	●	●	●	
<b>Immo Vest®</b>	●	●		●	●	●	●	●
<b>Immo</b>	●				●	●	●	
<b>Townsend Shoulder Sling</b>						●	●	●
<b>SHOULDER SLINGS</b>								
<b>Ligaflex®</b>			●					

**TYPICAL PATIENT**  
What profile?

**PRESCRIPTION**  
Which?

**INDICATION**  
Which?

**ITEM**  
Which?



# SHOULDER SLINGS

Glenohumeral immobilisation vests



## Micro-Ventilated Arm Sling

136001

- Aerated mesh material.
- Easy adjustment of the strap.
- Bilateral model.
- Analgesic immobilisation of the upper arm and forearm.

Waist circumference	
<b>S</b>	50 - 60 cm
<b>M</b>	61 - 71 cm
<b>L</b>	72 - 94 cm
<b>XL</b>	95 - 117 cm
<b>XXL</b>	118 - 140 cm



## Townsend Shoulder Sling

U05401

- Immobilisation of the shoulder with an abduction of 30° thanks to its anatomically formed pad
- Improved comfort thanks to the fabric neck-strap and padded straps
- Exercise ball included

	<b>S/M</b>	< 36 cm
	<b>L/XL</b>	> 36 cm



## Immo Classic

2445 01

- **Immobilisation of the shoulder and elbow** thanks to the **sleeve** and the **additional adjustable strap**
- **Adjustable protective foam pads** for optimum shoulder and neck comfort
- Easy-fitting for the patient due to the velcro on the abdominal strap

	<b>1</b>	50 - 71 cm
	<b>2</b>	72 - 94 cm
	<b>3</b>	95 - 117 cm
	<b>4</b>	118 - 140 cm



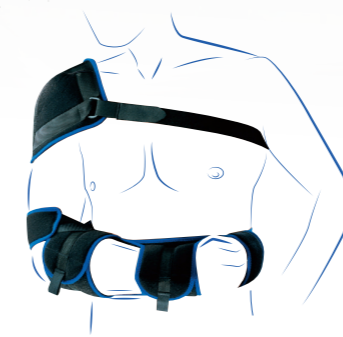
## Immo Vest®

Size 1 and 2

2441 02

- Immobilisation of the shoulder and elbow to the body through its **3 strap action**
- **High coverage vest** for better protection during daily use
- Extra comfort thanks to its **breathable fabric**, **shoulder padding** and **anatomical form**
- Easy to fit with numbered colour-coded fitting system

Build	Height		
	< 1,70 m	1,70 m - 1,80 m	> 1,80 m
	size 1		size 2



## Immo

2440 01

- **Immobilisation of the elbow to the body** through its **reinforced belt** and **support bands**
- Better comfort thanks to the belt that supports the arm, **no pressure on the shoulder and neck**
- Easy for the patient to put on with its Velcro attachment

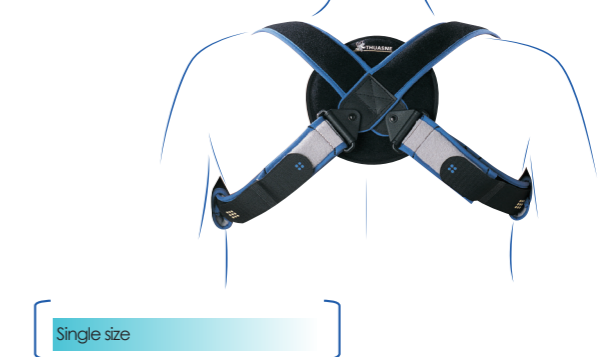
	<b>1</b>	50 - 71 cm
	<b>2</b>	72 - 94 cm
	<b>3</b>	95 - 117 cm
	<b>4</b>	118 - 140 cm

## Ligaflex® clavicular straps

2450 02

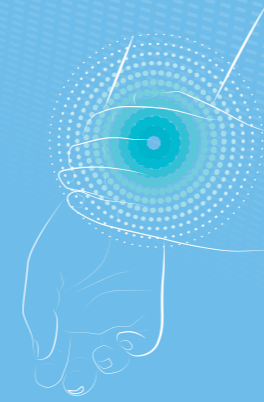
- **Secure immobilisation** thanks to a cutting system for **adjustment to the patient's size**
- **Dorsal foam anchoring pad** for optimum comfort
- Velcro fitting system and buckle fastening

Exists in a Junior version



Single size

# WRIST & ELBOW



The wrist is made up of several joints giving it a high level of flexion / extension and abduction / adduction mobility. The most common cause of wrist injury is a fall or twist, which can cause a mild or severe sprain, fracture or dislocation. The wrist can also suffer from osteoarthritis, a degenerative disease that primarily affects the thumb (basal thumb arthritis).

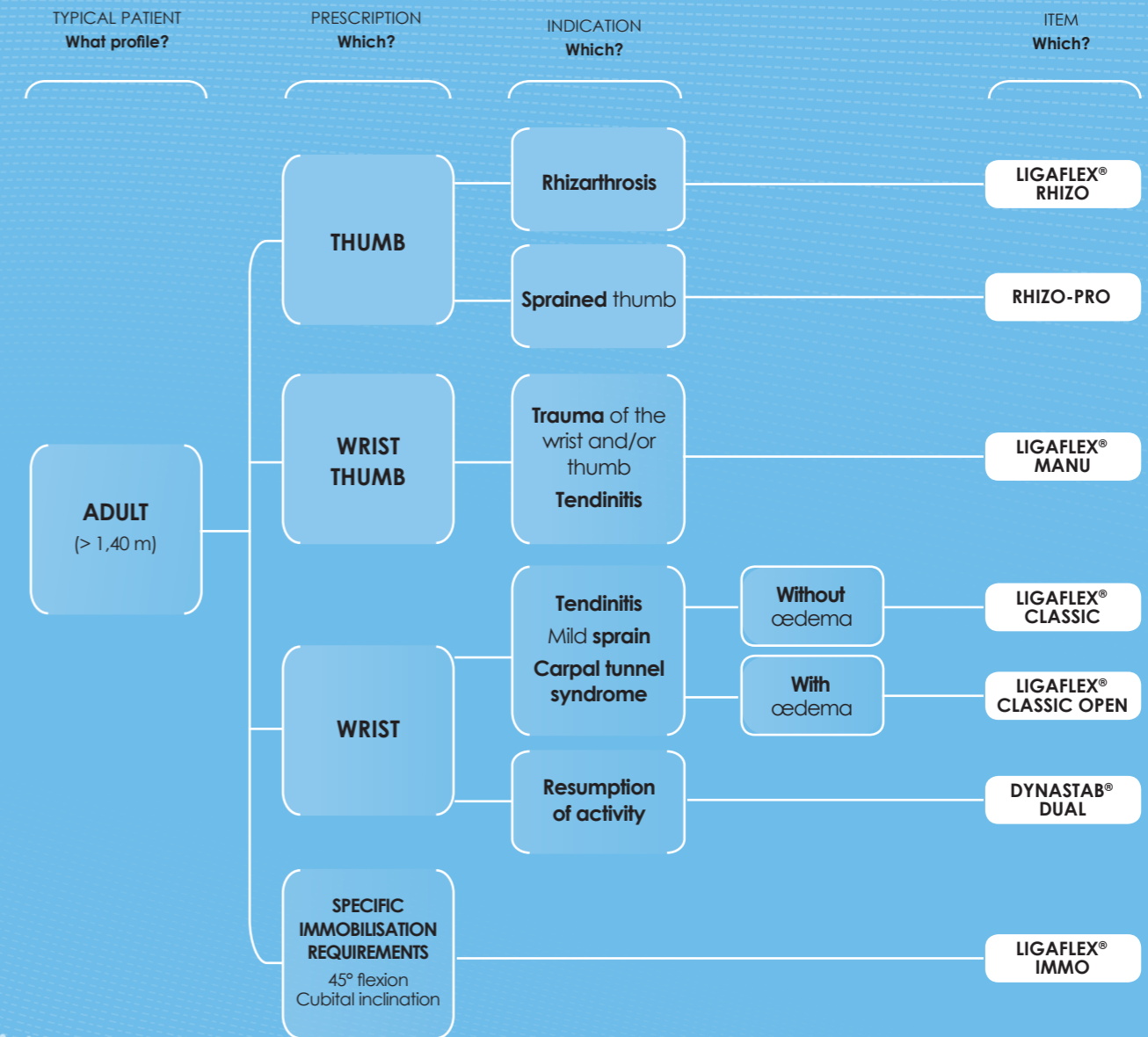
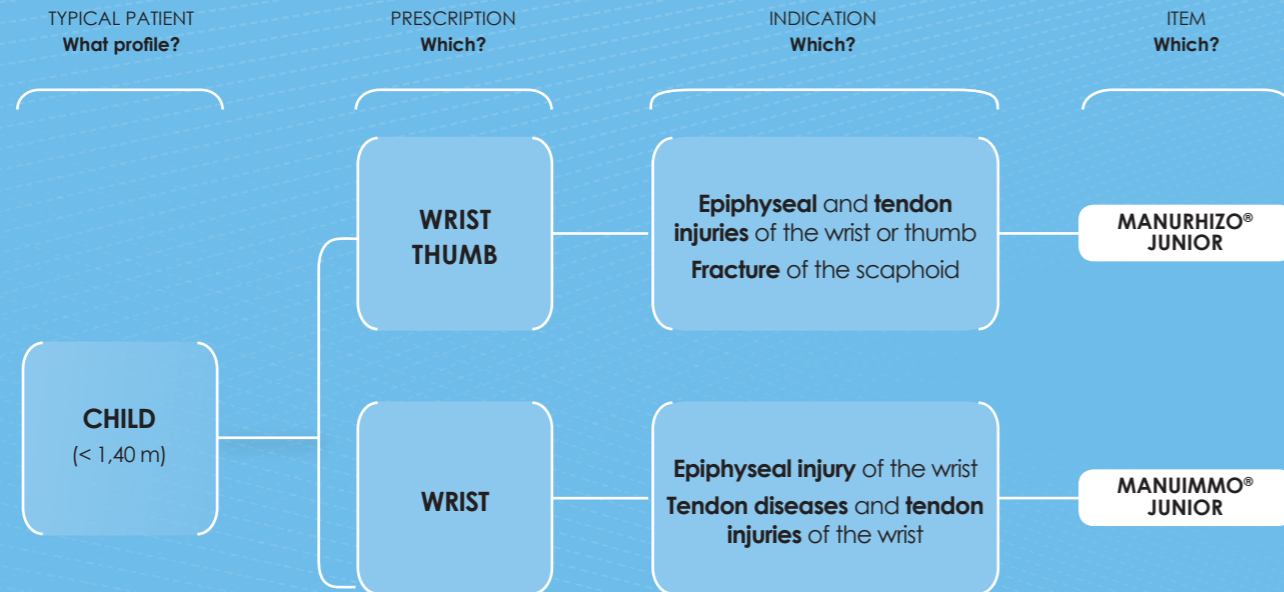


	LIGAMENT AND TENDON RELATED TRAUMA / INJURY						OSTEO-NEURAL INJURIES			POST-OPERATIVE AND RETURN TO WORK	
	Light to moderate sprain	Severe sprain	De Quervain's disease	Wrist tendinitis	Epicondylitis	Median Epicondylitis	Carpal tunnel without surgery	Rhizarthrosis	Fracture	Post-operative immobilisation	Resumption of activity
<b>WRISTS-THUMB</b>											
<b>Ligaflex® Manu</b>		●	●					●	●	●	
<b>WRISTS</b>											
<b>Ligaflex® Classic</b>	●			●			●			●	
<b>Ligaflex® Classic Open</b>	●			●			●			●	
<b>Ligaflex® Immo</b>	●			●			●	●		●	
<b>Dynastab® Dual</b>				●			●				●
<b>THUMB SPLINTS</b>											
<b>Ligaflex® Rhizo</b>	●							●			
<b>Rhizo-pro</b>	●							●			
<b>Ligaflex®</b>								●			●
<b>ELBOW BRACES</b>											
<b>Silistab® Epi</b>					●	●					
<b>Epimed ProMaster</b>					●	●					
<b>Epimed</b>					●	●					
<b>Condylex®</b>					●	●					

WRIST / ELBOW



# WRISTS & ELBOW BRACES



WRIST / ELBOW

## ACTION PRINCIPLE

Wrist, thumb and/or wrist-thumb immobilisation splints hold one or more joints in a resting position. The objective is to **limit pain and stabilise the joint(s)** in the desired therapeutic position while **maintaining mobility** in the adjacent zones. This allows **consolidation** and **healing**.

## ASSOCIATED ADVICE

**IN CASES OF RHIZARTHRISIS,** recommend Ligaflex® Rhizo for day-time use and Ligaflex® Manu for night-times.

- > **For day-time use,** the Ligaflex® Rhizo, a lightweight and discreet brace which holds the thumb in an analgesic rest position whilst maintaining pincer mobility. In this way it provides relief without effecting day-to-day activity.
- > **For night-time use,** the Ligaflex® Manu reduces muscular tension and calms pain.

# WRIST BRACES



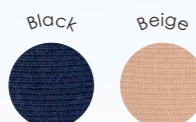
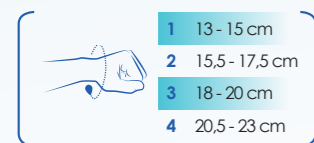
## Ligaflex® Manu

2430 02

- **Firm support for the thumb and wrist** thanks to the **2 anatomical stays**, which are conformable and radio-transparent (palm and thumb column)
- **Antibacterial-treated 3D knit**, lightweight and breathable for effective moisture-wicking. Suitable for long-term wear

2 models: right and left

Exists in a junior version



## Wrist braces



## Ligaflex® Classic

2435 02

- **Firm wrist support** thanks to its **anatomically shaped, adjustable and X-ray transparent palm reinforcement**
- **Antibacterial-treated 3D weave**, lightweight and breathable for effective moisture-wicking, suitable for long-term wear.
- 2-in1 straps for **an even support**

2 models: right and left

Exists in a junior version



## Ligaflex® Classic Open

2437 02

- **Fully opening for easy fitting and removal**, more appropriate in the event of oedema. Particularly indicated in post-traumatic situations
- **Firm wrist support** thanks to the radio-transparent conformable **palm stay**
- **Antibacterial-treated 3D knit**, lightweight and breathable for effective moisture-wicking. Suitable for long-term wear

Ambidextrous version

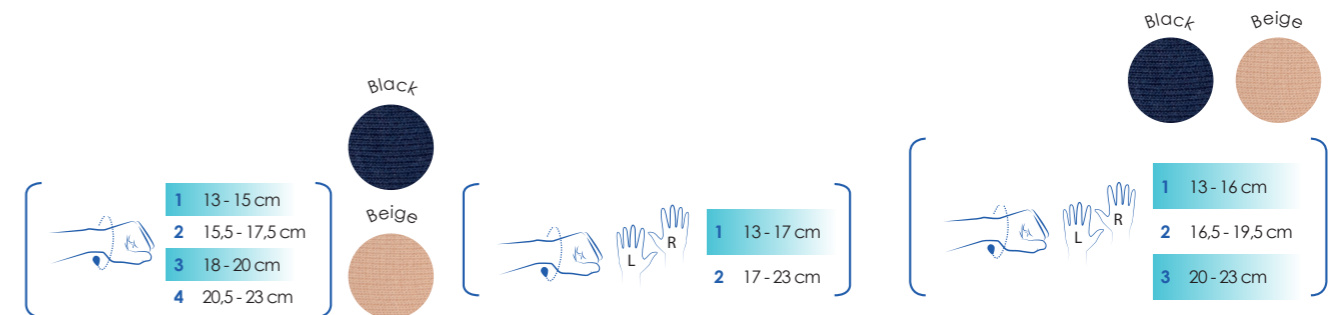


## Dynastab® Dual

7040 02

- Wrist support thanks to anatomically shaped palm and back of the hand stays
- Antibacterial-treated 3D weave, lightweight and breathable for effective moisture-wicking

Ambidextrous version

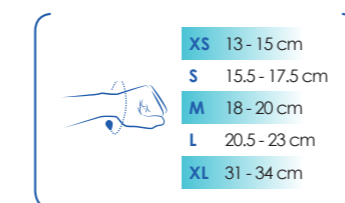


## Ligaflex® Immo

7080 02

- **Firm wrist support in extension** thanks to **2 anatomically-shaped stays at the palm and back of the hand**. Radio-transparent, conformable stays
- **Long length** for optimum immobilisation
- **Progressive brace with additional reinforcement kit**. Can also immobilise:
  - during flexing
  - during flexing and cubital inclination
- **Antibacterial-treated 3D knit**, lightweight and breathable for effective moisture-wicking. Suitable for long-term wear

2 models: right and left



## Ligaflex® Immo stay kit

7080 90

X-ray transparent, conformable stays

2 models: right and left

# THUMB SPLINTS



## Thumb splints



### Ligaflex® Rhizo

7090 02

- Immobilisation of the thumb in a painless position by a patented wire frame in the thumb web space
- Opening at the thumb column to prevent any pressure on the painful zone
- Particularly suitable for basal thumb arthritis
- Preserves grip movements and maintains the wrist's range of motion
- Antibacterial-treated 3D knit, lightweight and breathable for effective moisture-wicking. Suitable for long-term wear

2 models: right and left



### Rhizo-pro

T480273

- Immobilisation of the thumb column
- Perforated wire frame with soft breathable lining and padding around the articulations

Ambidextrous version



### Ligaflex®

7085 01

- Comfortable aluminium wire frame allowing the thumb column to remain at rest whilst maintaining wrist mobility

2 models: right and left



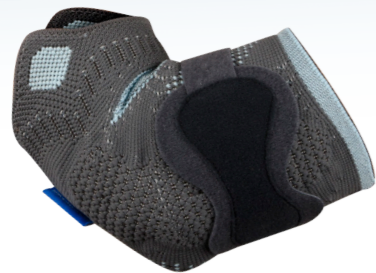
# ELBOW BRACES



## Silistab® Epi

2305 02

- Relief guaranteed by the **silicone inserts with a massage effect** and the **compressive knit** providing a **reinforced proprioceptive effect**
- Adjustable compression thanks to the additional removable strap
- **Anatomically-shaped knit** with **comfort zones** at the elbow crease and patented pull tabs



Find out more



1	19 - 22 cm
2	22 - 25 cm
3	25 - 28 cm
4	28 - 31 cm
5	31 - 34 cm
6	34 - 37 cm

## Tennis-elbow armbands



### Epimed ProMaster T350871

- **Rigid armband with double pressure targets** thanks to the silicon inserts
- Additional inserts (Flexi-Pads) available to increase pressure if required
- Adjusted with the Velcro fastening, compression area indication for easier fitting

XS	22 - 23 cm
S	24 - 25 cm
M	26 - 27 cm
L	28 - 30 cm
XL	31 - 34 cm



### Epimed T480011

- **Rigid arm band with dual targeted pressure** with comfortable felt inserts
- Easy adjustment by velcro fastening tabs

XS	22 - 23 cm
S	24 - 25 cm
M	26 - 27 cm
L	28 - 30 cm
XL	31 - 34 cm



### Condylex® 7007 02

- **Pressure adjustment** thanks to the Velcro fastening with tightening strap
- **Vibration absorbing inner foam**

1	22 - 26 cm
2	27 - 32 cm

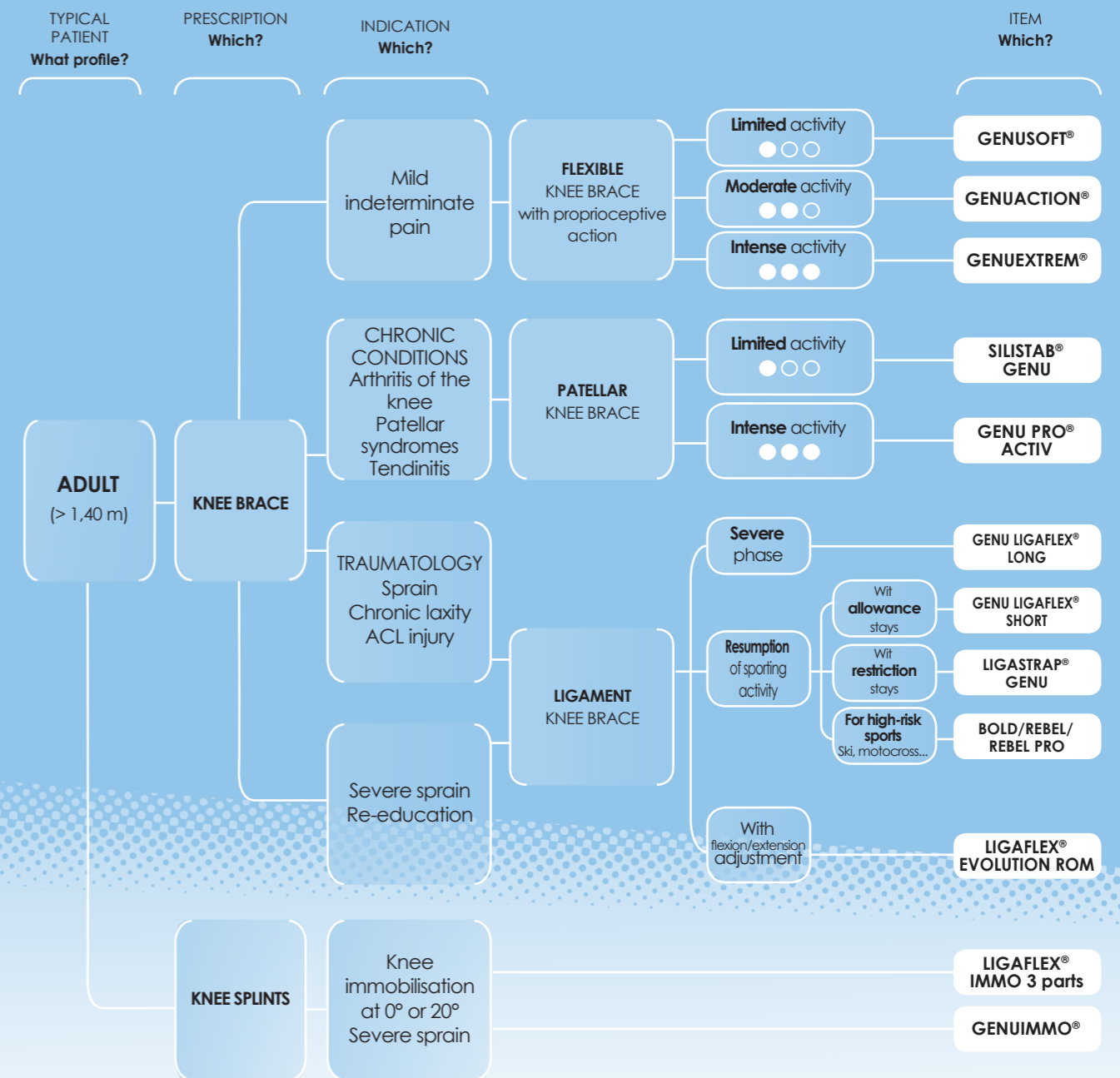
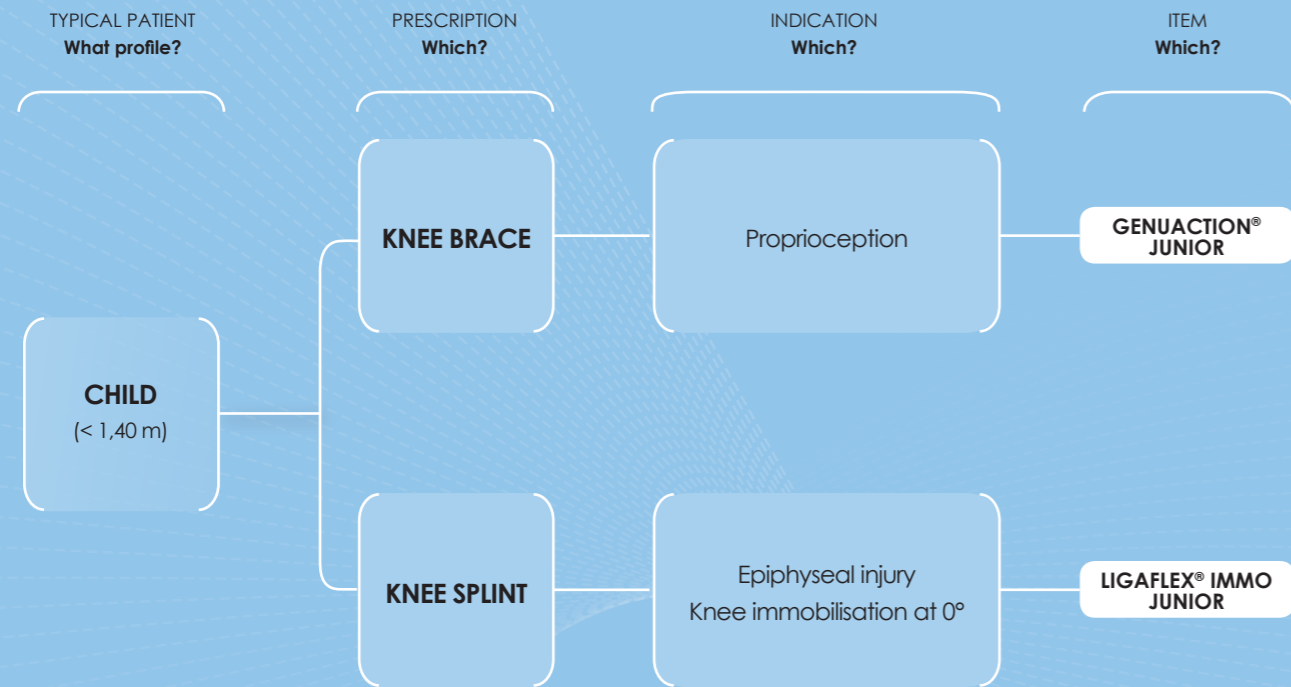
# KNEE

The knee is a complex system made up of bones, ligaments, tendons and cartilage structures enabling us to assume a static position and walk. Its mobility involves a combination of rolling and sliding movements. Most knee problems are caused by injury (sprain or cruciate ligament rupture) or degenerative conditions (osteoarthritis).



	TRAUMA INJURIES					PREVENTION AND RE-EDUCATION / RETURN TO WORK				CHRONIC CONDITIONS				
	Mild sprain	Moderate sprain	Severe sprain	Knee immobilisation	Patellar dislocation	Post-operative re-education	Resumption of activity	Resumption of sporting activity	Proprioception	Patellar tendon disease	Patellar syndromes	Arthritis of the knee	Chronic laxity	Sever chronic laxity
<b>FLEXIBLE KNEE BRACES</b>														
Genusoff®														
Genuaction®														
Genuxtrem®														
Ligastrap® Genu														
<b>PATELLAR KNEE BRACES</b>														
Genu Pro® Activ														
Genu Pro® Comfort														
Silistab® Genu														
Patellar bandage														
<b>LIGAMENT KNEE BRACES</b>														
Genu® Dynastab														
Genu® Ligaflex														
Ligaflex® Evolution ROM														
BOLD														
Rebel Standard														
Rebel Pro														
Rebel Lock														
<b>BRACES FOR KNEE ARTHRITIS</b>														
Rebel Reliever														
Dynamic Reliever														
<b>KNEE SPLINTS</b>														
Genuimmo® 0°, 20°														
Ligaflex® Immo 0°, 20°														
Ligaflex® Post-op														

# KNEE BRACES



## ACTION PRINCIPLE

### PROPRIOCEPTIVE KNEE BRACE

- > Improved proprioception (perception of the body in space) via the use of a compressive knit.
- > Used in the event of mild joint pain or resumption of activities.

### PATELLAR KNEE BRACE

- > Kneecap supported by the silicone ring and proprioceptive effect thanks to the compressive knit.
- > Used in the event of tendinitis or a chronic condition (osteoarthritis, etc.).

### LIGAMENT KNEE BRACE

- > Supports the knee via the use of hinged rigid reinforcements.
- > Used in the phase immediately following injury (depending on the severity), or in the resumption of sports phase.

### KNEE SPLINT

- > Analgesic and protective effect due to complete immobilisation of the knee.
- > Used immediately after an injury or postoperatively.

# KNEE BRACES

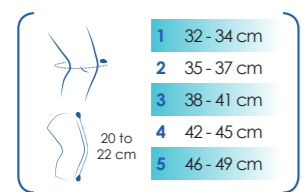
## Proprioceptive knee braces



### Genusoff®

2320 03

- **Proprioception** provided by the elastic compressive weave (about 17 mmHg)
- **Anatomically-shaped weave** with comfort zone beneath the knee

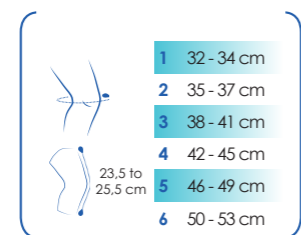


### Genuaction®

2325 02

- **Support and proprioception** provided by the elastic compressive weave (about 23 mmHg)
- **Anatomically-shaped weave** with comfort zone around the patellar beneath the knee

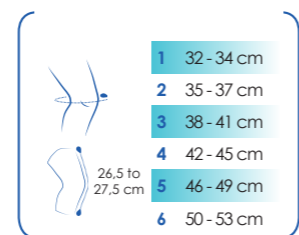
*Exists in a junior version*



### Genuextrem®

2321 01

- **Support and proprioception** provided by the elastic compressive knit (approximately 28 mmHg)
- **Additional lateral reinforcement** provided by flexible stays
- **Anatomically-shaped knit** with comfort zones over the kneecap and behind the knee
- **Easy to put on** thanks to patented pull tabs
- **Lateral silicone anti-slip system** for better hold



## Ligament knee brace with functional strapping

### Ligastrap® Genu

2170 02

#### PRACTICALITY

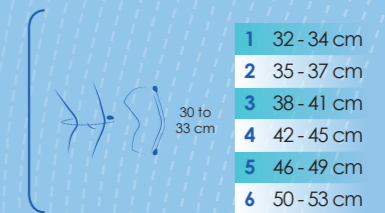
- **Patented pull tabs**
- **Fitting guidance:** numbered and pre-directed straps

#### STABILITY

- **Double strapping system**
- Cross-over of two straps over the condyles
- **Compressive knit** (approximately 26 mmHg)

#### COMFORT

- **Integrated comfort zones:** knee cap, behind the knee
- **Anatomically-shaped knit**
- Straps fastened by velcro



KNEE

# KNEE BRACES



## Genu Pro® Activ

2347 02

- **Proprioceptive stimulation** provided by the silicone **patellar insert** and the **elastic compressive knit** (approximately 26 mmHg). The patellar insert provides firm support for the kneecap and serves as a protective guide for the patellar tendon
- **Anatomical design** for better adjustment to shape: anatomical cut at the calf, comfort zone behind the knee, stretchy knit over the thigh and calf
- **Flexible lateral reinforcements**. **Lateral silicone anti-slip system** for better hold

	Thigh circumference (a)	Calf circumference (b)
1	35 - 38 cm	25 - 28 cm
2	38 - 41 cm	28 - 31 cm
3	41 - 44 cm	31 - 34 cm
4	44 - 47 cm	34 - 37 cm
5	47 - 51 cm	37 - 41 cm
6	51 - 55 cm	41 - 45 cm
6+	55 - 59 cm	43 - 47 cm



N.B. : if the two measurements do not correspond to the same size, choose the size corresponding to measurement (b)

## Patellar knee braces



## Genu Pro® Comfort

2346 03

- **Silicon patellar insert**
- **Proprioception** provided by the elastic compressive weave
- **Flexible lateral stays**
- **Extra comfort** thanks to its **hyper extensible** weave at the rear
- Lateral silicon anti-slip system for better hold



## Silistab® Genu

2340 05 (white)  
2345 04 (black)

- **Silicone patellar insert**
- **Proprioception** provided by the elastic compressive knit (approximately 24 mmHg)
- **Flexible lateral reinforcements**
- Comfortable with its **jersey** behind the knee
- Lateral silicone anti-slip system for better hold

**2 versions: patellar open (white) and patellar closed (black)**

	Thigh circumference (a)	Calf circumference (b)
1	31 - 33 cm	25 - 28 cm
2	34 - 36 cm	28 - 31 cm
3	37 - 39 cm	31 - 34 cm
4	40 - 42 cm	34 - 37 cm
5	43 - 45 cm	37 - 41 cm
6	46 - 48 cm	41 - 45 cm



	Thigh circumference (a)	Calf circumference (b)
1	31 - 33 cm	25 - 28 cm
2	34 - 36 cm	28 - 31 cm
3	37 - 39 cm	31 - 34 cm
4	40 - 42 cm	34 - 37 cm
5	43 - 45 cm	37 - 41 cm
6	46 - 48 cm	41 - 45 cm



Single size	Length
Single size	26 - 50 cm

## Patellar bandage



## Patellar bandage

2304 01

- Applies **local pressure** over the patellar tendon and **supports the kneecap** due to its anatomical shape



# KNEE BRACES



## Ligament knee braces



### Genu Dynastab®

2370 05

- Provides stability via bi-axial articulation stays and adjustable rigid straps
- Semi-circular straps to avoid any risk of tourniquet effect
- Anatomically-shaped design for better morphological adjustment: comfort zone around the back of the knees, stretch weave on the thigh



### Ligaflex® Evolution ROM

2386 03

- Flexion/extension limitation from 0 to 150° without tool (10° graduations), provided by physiological articulation
- Provides stability via bi-axial articulation stays and rigid straps
- Crossed straps around the thigh for better fitting of the lateral struts
- Easy to fit: completely open design



## Hinged ligament knee braces

### Genu Ligaflex®

2375 03 (closed)

2375 04 (open)

#### COMFORT

- Hyper-extensible weave zones:
  - behind the knee
  - patellar
  - thigh
- Semi-circular straps
- Anatomically shaped wire frames

#### STABILITY

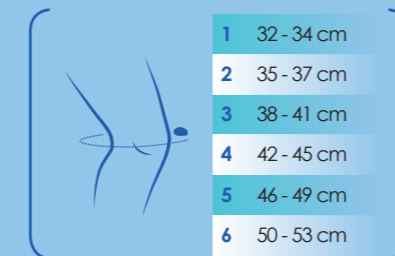
- Aluminium lateral reinforcements
- Velcro lining to adjust the position of the frames
- Optimal articulation positioning: in the knee rotation axis

#### SUPPORT

- TM5 articulation reproducing the natural movement of the knee
- Suspension strap
- Non-slip silicon integrated into the weave

#### PRACTICALITY

- Even bi-lateral strap fastenings
- Easy to put on: weave stretch



Short version closed (30 cm)

#### • Open version: Genu Ligaflex® OPEN

- Opens at the front
- Complete easy to position patellar ring
- Removable buckles



Short version open (30 cm)



Long version open (40 cm)



Long version closed (40 cm)

KNEE

# KNEE BRACES

## SoftForce U07802

### ROUTINELY PRESCRIBED FOR

Patients with mild to moderate medial or lateral OA who are more compatible with a less rigid knee brace that offers compression and comfortable leg alignment support.

### OFFERED WITH THESE STANDARD FEATURES

- Latex Free Fiber Cool Compression Sleeve
- Patented Townsend Motion TM6 Hinge
- Hinge Pockets (No Exposed Metal)
- Adjustable Aluminum Bar With Paddles
- Condylar Pads
- Extension Stops

### AVAILABLE OPTIONS INCLUDE

- Medial Or Lateral OA
- Option Of Lateral Hinge Position For Lateral OA
- Flexion Stop Kit



Knee circumference	
XS	30.5 - 33 cm
S	33 - 35.5 cm
M	35.5 - 38 cm
L	38 - 43 cm
XL	43 - 48 cm
XXL	48 - 53 cm
XXXL	53 - 56 cm
XXXXL	56 - 58.5 cm



## Rigid ligament knee braces



Find out more



## BOLD U30601

- **Held in place** by the **TM5+ articulation** reproducing the natural movement of the knee and the **suspension strap** (US patent / Thuasne innovation)
- **Stability** provided by the **aluminium** wire frame and the **anatomical form** of the tibia shell, which stops the brace from twisting on the leg
- **Comfortable** thanks to its **self-adjusting plastic** extremities and foam padding

2 models: right and left

S	9 - 10 cm
M	10 - 11,5 cm
L	11,5 - 13 cm
XL	13 - 14 cm

## Rigid ligament knee brace



## Rebel Lock U30202

- **Articulation can be fixed in extension** by simple pressure: for patients suffering from serious laxity or quadriceps muscle insufficiency
- Stability provided by the **aluminium** wire frame and the **anatomical form** of the tibia shell, which stops the brace from twisting on the leg

XS	8 - 9 cm
S	9 - 10 cm
M	10 - 11,5 cm
L	11,5 - 13 cm
XL	13 - 14 cm



U03002



U03102



## Rebel Standard U03002

- **Held in place** by the **TM5+ articulation** reproducing the natural movement of the knee and the **suspension strap** (US patent / Thuasne innovation)
- **Stability** provided by the **aluminium wire frame** and the **anatomical form** of the tibia shell, which stops the brace from twisting on the leg

## Rebel Pro U03102

- Greater rigidity than the Standard version
- Compression/Suspension pack

2 models: right and left

XS	8 - 9 cm
S	9 - 10 cm
M	10 - 11,5 cm
L	11,5 - 13 cm
XL	13 - 14 cm
XXL	14 - 15 cm*

\* only on Rebel Pro

## Braces for knee arthritis



## Rebel Reliever U03305

- **Loadshifter** system to **offload the injured compartment** for knee arthritis cases
- Adjustable without tools
- **Held in place** by the **TM5+ articulation** reproducing the natural movement of the knee and the **suspension strap** (US patent / Thuasne innovation)

XS	8 - 9 cm
S	9 - 10 cm
M	10 - 11,5 cm
L	11,5 - 13 cm
XL	13 - 14 cm
XXL	14 - 15 cm

Brace for knee arthritis

## Active Reliever U07803

### ROUTINELY PRESCRIBED FOR

- Unicompartement Osteoarthritis
- Articular Cartilage Defect Repair
- Meniscal Cartilage Repair
- Osteochondral Defect Repair



### PRODUCT FEATURES

- Breathable spacer fabric sleeve with posterior expandable Lycra panel
- Anatomically correct roll-and-glide Townsend Motion Hinge with adjustable ROM stops
- Semi-rigid, self-contouring nylon superstructure sewn into the sleeve
- Benable bars for customization of the fit and counterforce
- Corrective Force Strap applies maximum counterforce at midstance phase of gait
- Patient friendly quick release buckles
- Open anterior thigh section for easy donning and doffing



15 cm above the knee

XS	33 - 38 cm
S	38 - 45.5 cm
M	45.5 - 53 cm
L	53 - 58.5 cm
XL	58.5 - 66 cm
XXL	66 - 73.5 cm
XXXL	73.5 - 81 cm

NEW



15 cm below the knee (a) 15 cm above the knee (b)

1	28 - 35 cm	35 - 45 cm
2	35 - 43 cm	45 - 61 cm
3	43 - 48 cm	61 - 71 cm



## Dynamic Reliever

U30801

### PATIENT COMPLIANCE

- **Comfortable, discreet and lightweight** (450 g) for a long-term wear
- Easy to put on and take off thanks to the **quick release buckles**

### ADJUSTABLE CORRECTIVE FORCE

- **Telescoping Townsend Motion hinge** (patent pending) for a dynamic offloading when walking
- Adjustment by **contouring the upright**, tightening the straps or increasing condylar pad thickness

### SUPPORT

- Tight support thanks to the calf strap and the **anatomical hinge system** (Townsend Motion)
- Adjustable and comfortable semi-rigid thigh and calf shells
- **Adjustable tibia bolster** (patent pending) preventing brace rotation

### MODULAR COMPONENTS

- **Modular components** (thigh shell, hinge and calf shell) that clip together **with no tools** (patent pending) to fit all body shapes

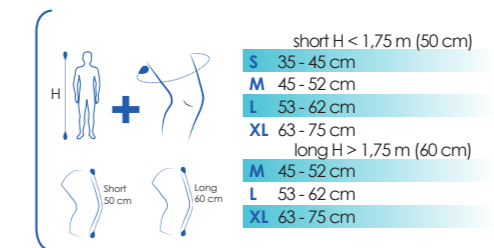
## KNEE SPLINTS



## Genuimmo® 0° 2415 01 and 20° 2425 01

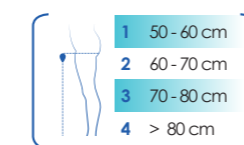
- **Immobilisation** provided by 3 radio-transparent conformable stays
- **Anatomical fit** thanks to 4 separate height-adjustable straps
- **Comfortable** with its wide openings and folding central panel
- **Easy to use:** fitting guidance. Easy access to the knee for treatments

2 versions (0 and 20°)



## Ligaflex® Immo 2400 03

- **Immobilisation** provided by 4 adjustable X-ray transparent stays
- **Anti-slip system** and **tightening straps** for better brace support of the leg
- **Adjusts to all leg and thigh circumferences** with its 3 mobile panels



## Ligaflex® Post-op 2384 01

2384 01

- **Immobilisation** provided by 2 adjustable lateral reinforcements
- **Adjustable height** for correct support
- **Flexion adjustable from 0 to 120° and extension from 0 to 75°**

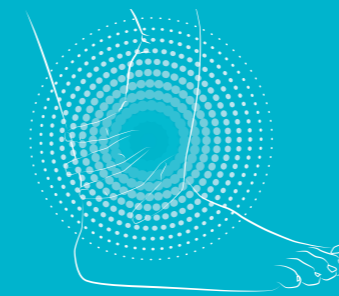
2 versions (open and closed)



ANKLE



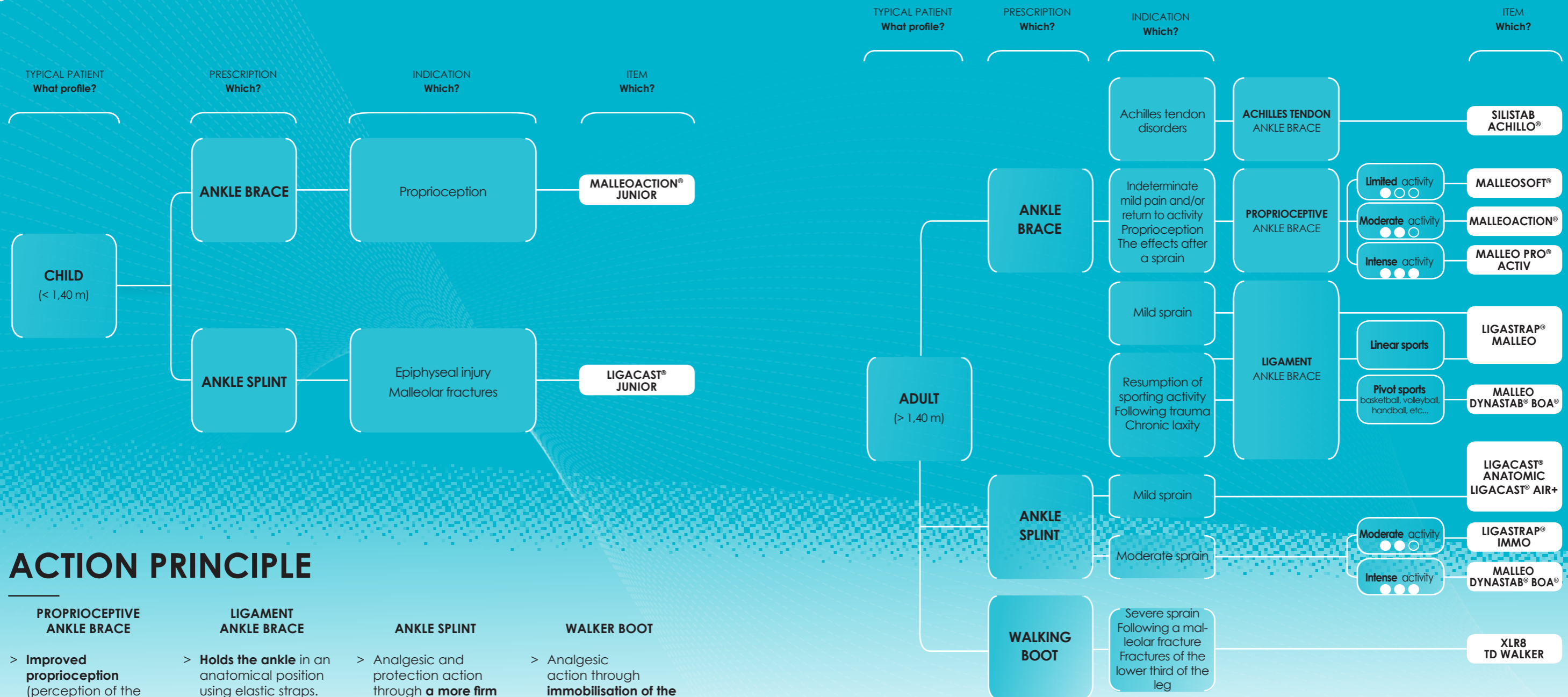
# ANKLE



The only physiological movement of the ankle joint is flexion/extension of the foot relative to the leg. However, while walking, there may be lateral movements of the ankle, which can cause ligament damage (sprains) or bone injuries (malleolar fractures).

	LIGAMENT AND TENDON RELATED TRAUMA / INJURY				FRACTURES AND POST-OPERATIVE PHASES				PREVENTIVE TREATMENT AND RETURN TO WORK				
	Mild sprain	Moderate sprain	Severe sprain	Achilles tendon disorders	Fracture of the foot and the front of the foot	Malleolar fractures	Fractures of the lower third of the leg	Pre or post-operative ankle stabilisation	Proprioception	Chronic laxity	Resumption of activity	Resumption of sporting activity	Protection of malleoli
<b>PROPRIOCEPTIVE ANKLE BRACES</b>													
Malleosoft®									●		●		
Malleaction®									●		●		
Silistab® Malleo									●				●
Silistab Achillo®				●									
Malleo Pro® Activ										●	●	●	●
<b>LIGAMENT ANKLE BRACES</b>													
Ligastrap® Malleo	●								●	●		●	
<b>ANKLE SPLINTS</b>													
Malleo Dynastab® Boa®	●	●										●	
Malleo Dynastab®	●	●										●	
Ligastrap® Immo		●											
Ligacast® Air+	●	●											
Ligacast® Anatomic	●	●											
Ligacast® Gel		●											
<b>WALKING BOOTS</b>													
XLR8 long			●			●	●	●					
XLR8 short			●			●	●	●					
TD ROM Walker long								●					

Boa® is a registered trademark of Boa Technology Inc.



## ACTION PRINCIPLE

- | PROPRIOCEPTIVE ANKLE BRACE   | LIGAMENT ANKLE BRACE  | ANKLE SPLINT   | WALKER BOOT  |
|--|---|--|--|
| <ul style="list-style-type: none"> <li>&gt; <b>Improved proprioception</b> (perception of the body in space) via the use of a compressive knit.</li> <li>&gt; Used in the event of mild joint pain or resumption of activities.</li> </ul> | <ul style="list-style-type: none"> <li>&gt; <b>Holds the ankle</b> in an anatomical position using elastic straps.</li> <li>&gt; Used in the phase immediately following injury (depending on the severity), or in the resumption of sports phase.</li> </ul> | <ul style="list-style-type: none"> <li>&gt; Analgesic and protection action through <b>a more firm immobilisation</b> of the ankle. Its compressive effect can help reduce oedema.</li> <li>&gt; Used immediately after an injury or postoperatively.</li> </ul> | <ul style="list-style-type: none"> <li>&gt; Analgesic action through <b>immobilisation of the ankle</b>, reduction of the oedema thanks to <b>adjustable compression</b>, also suitable for managing post-operative treatment.</li> <li>&gt; Used in severe sprains or postoperatively.</li> </ul> |

ANKLE

# ANKLE BRACES

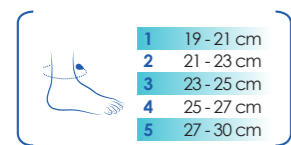
## Proprioceptive ankle braces



### Malleosoff®

3600 02

- **Proprioception** provided by the elastic compressive weave (about 17 mmHg)
- **Anatomically-shaped weave** with comfort zone around the malleoli

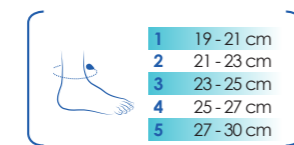


### Malleoaction®

2361 02

- **Support and proprioception** provided by the elastic compressive knit (approximately 22.5 mmHg)
- **Anatomically-shaped knit**, comfort zone over the malleoli and patented pull tabs

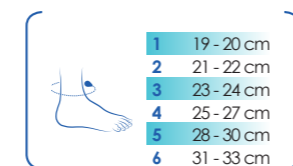
Exists in a junior version



### Silistab® Malleo

2365 01

- **Silicon insert** to protect the m and **support the instep**
- **Proprioception** thanks to its elastic compressive weave (21 mmHg)
- **Anatomically shaped weave**



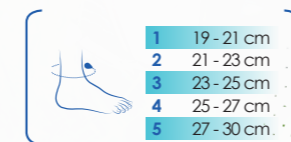
## Achilles tendon ankle brace



### Silistab Achillo®

2355 02

- **Offloading of the Achilles tendon** provided by **soft silicone heel pieces**: 2 pairs of stackable heel pieces permitting 3 offloading heights depending on the course of the condition (13, 8 or 5 mm)
- **Tendon protection** thanks to the anatomical shape of the peri-Achilles silicone insert
- **Anatomically-shaped knit**, comfort zone over the malleoli and patented pull tabs
- **Massage effect** thanks to the dimpling on the silicone insert
- Elastic compressive knit (approximately 23 mmHg)



ANKLE

# ANKLE BRACES

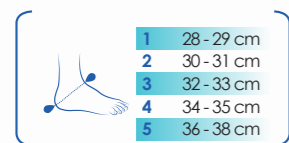


## Malleo Pro® Activ

2368 02

- **Support and proprioception** provided by its elastic compression weave (about 27 mmHg) and **integrated supination brake**
- **Anatomically shaped weave**, silicon comfort zone and inserts to protect the malleoli

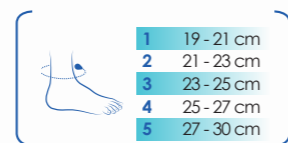
2 models: right and left



## Ligastrap® Malleo

2180 03

- **Reinforcement of the lateral ligaments** thanks to the elastic compressive knit (approximately 27.5 mmHg) and **double strapping**
- **Additional reinforcement** and placing in slight eversion position thanks to a **removable strap**
- Wearer comfort: minimum thickness and velcro adjustment
- Anti-slip system on the calf for better hold



Stabilising ankle splint

## Malleo Dynastab® Boa®

2351 01

### PRACTICALITY

- **Easy fitting and removal** thanks to the wide opening
- Fast, easy and reliable **Boa® tightening system**, with a lifetime guarantee

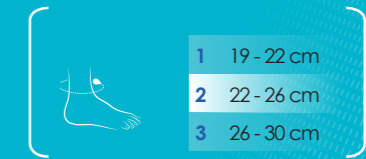
### IMMOBILISATION

- Resistant and comfortable lightweight **metal reinforcements**
- **Additional lateral reinforcement** provided by 2 strapping straps

### COMFORT

- **Antibacterial-treated 3D knit**, lightweight and breathable for effective moisture-wicking
- **Slim, anatomical design**: can be worn in most types of shoes

Find out more



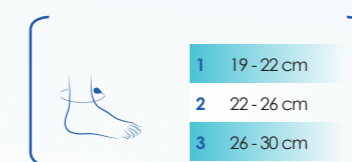
Boa® is a registered trademark of Boa Technology Inc.



## Malleo Dynastab®

2350 03

- **Precise lace-up tightening**



ANKLE

# ANKLE SPLINTS



Splint with reinforcing strap

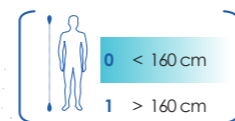


## Ligastrap® Immo

2337 02

- **Firm support** for the ankle provided by 2 rigid side shells and the dual-strap fastening system
- **Additional support** provided by a **removable strapping strap**
- **Inner lining made of thermoregulating Outlast® fabric** for long-term comfort
- **Fits the patient's anatomy:** side supports with asymmetrical hollows for the malleoli
- **Simplified fastening** using the pulley system and velcro straps for precise adjustment and uniform tightening of the brace

2 models: right and left



Splint with inflatable inserts



## Ligacast® Air+

2334 01

- **Firm support** for the ankle provided by 2 rigid side shells
- Protection reinforced by the **inflatable inserts** for a perfect anatomical fit
- The air circulating inside the pads provides a massage effect to help reduce oedema
- **Easy to fit** thanks to the velcro straps and adjustable heel strap
- **Separate inflator bulb** for adjustment of air pressure once the brace is in place

Bilateral model



Splint with honeycomb inserts



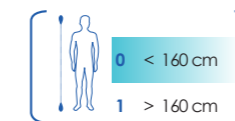
## Ligacast® Anatomic

2315 01

- **Firm support** for the ankle provided by 2 rigid side shells
- Flexible edges for an anatomical fit
- **Honeycomb interior** for enhanced wearer comfort
- **Fits the patient's anatomy:** side supports with asymmetrical hollows for the malleoli

2 models: right and left

Exist en a junior version



Splint with gel pads

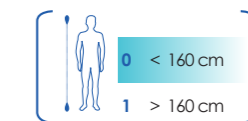


## Ligacast® Gel

2335 01

- **Firm ankle support** thanks to its 2 rigid lateral shells
- **Localised cryotherapy:** cooling inserts to reduce the oedema and pain
- **Shoe laces** can be passed through the eyelets solidly joining shoe and ankle for even better support
- **Morphological adjustment to the patient** thanks to its asymmetrical lateral supports which fit around the malleoli

2 models: right and left





# WALKER BOOTS



## XLR8

U08902 (long) - U09002 (short)

### IMMOBILISATION

- Integral rigid shell
- 2 integrated independent air cells for a precise anatomical fit

### PRACTICALITY

- Removable rigid shell enabling full opening of the bootee
- Easy, quick inflation to adjust the pressure to the oedema once the walker boot is in place
- Removable and washable inner bootee

### COMFORT

- Curved, anti-skid sole for natural, comfortable walking
- Adjustable toe guard (3 positions)

2 versions: long and short



XS	< 35
S	35 - 38
M	39 - 43
L	44 - 47
XL	> 47

Find out more



## TD ROM Walker

U08202 (long)

- Range of motion adjustment possible from 45° plantar flexion to 30° dorsal flexion in 7.5° stages
- Firm support provided by the anatomically-shaped metal lateral reinforcements
- Ultra-light product for a high level of wearer comfort day-to-day



XS	< 35
S	35 - 38
M	39 - 43
L	44 - 47
XL	> 47

Find out more



## Night Splint

U09101

- Adjustable, non elastic resistant straps allow continuous calm stretching protocols
- Open cell foam liner is washable and semi-permeable to eliminate excessive heat absorption
- Comfortable, non-irritable strap pads help protect against discomfort on bony anatomy
- Ventilated, lightweight medical grade plastic shell configuration
- Easy to use, convenient center release buckles
- Non-slip outer sole



Shoe size	
S	<39
M	40 - 44
L	>45



## Nox Splint

U09102

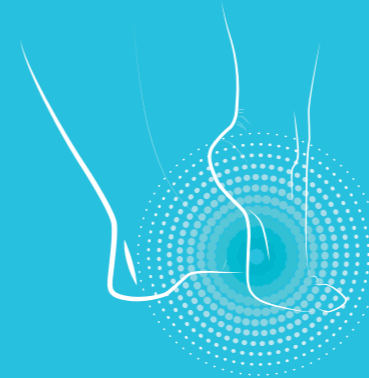
- Hinge design allows for individual comfort and outcomes
- Adjustable Tension Strap
- Position Indicator Window
- Well Padded (Strategic Interior Air Bladder)
- Wider Metatarsal Region
- Non-Skid Sole
- Optional Accessory Strap



Shoe size	
S/M	36 - 42
L/XL	43 - 48

# FOOT

The foot is essential for the human body to stand upright. It also plays a shock absorption role and serves to propel the foot forwards when walking. Feet can be subject to anatomical, tissue and articulation deformations.



## INSOLES AND HEEL INSERTS

	Articulation shock absorption	Metatarsalgia	Bursitis	Plantar fasciitis	Heel spurs	Osteoarthritis
<b>INSOLES</b>						
Pedipro® insoles	●		●	●		
Pedipro® Plus insoles	●	●		●		
Podosil						●
<b>HEEL INSERTS</b>						
Pedipro® heel inserts	●				●	
Pedipro® Plus heel inserts	●				●	
Pedipro® Softer heel inserts	●				●	
Elastocalx N, SP	●				●	●
Elastocalx Plus, Flex	●				●	●
Sohli					●	

## OTHER FOOT SPLINTS

	Foot levator muscle weakness	Congenital malposition	Maintenance and post-operative hallux-valgus therapy
Pero-Med	●		
Pero-Med AFO III/II	●		
Pero-Med Adapt	●		
Peducy		●	
Hallux Pro Night			●

## SHOES

	Heel unloading in cases of:		Front-foot unloading in cases of:		Bandaged feet
	Plantar ulcer	Post-operative	Plantar ulcer	Post-operative	
<b>PODO-MED</b>					
T500501 / T500511	●	●			
T500301			●	●	
T500401 / T500451 / T500471			●	●	
T500601 / T500651					●

FOOT

# INSOLES AND HEEL INSERTS

## Insoles and heel inserts



### Pedipro®

6510 01 - 6500 01

- **Flexible silicon** providing shock absorption and distribution
- Extra comfort thanks to **ventilation channels** which provide better aeration
- Reinforced heel support in the shoe through **non-slip pads**
- Sold in pairs
- Under-heel thickness: 8 mm



### Podosil

T478801

- Silicon visco-elastic insoles with **hypo-allergenic coating**
- **Support to feet and unloading of the sensitive areas** of the front-foot and heel
- Additional unloading of the heel spur thanks to a dedicated concave zone
- Extra comfort from the **cotton lining**, that is easily tolerated by the skin
- Sold in pairs



### Pedipro® Softer

6605 01

- **Flexible silicon** providing shock absorption and distribution
- **Progressive heel inserts with concave areas for suitable inserts:** aniseed green insert for heel spur comfort, blue insert for healthy feet or other conditions
- Extra comfort thanks to **ventilation channels** which provide better aeration
- **High sides** for better fit inside shoe
- Sold in pairs
- Under-heel thickness: 10 mm



### Pedipro® Plus

6610 01 - 6600 01

- **Flexible silicon** providing shock absorption and distribution
- **Comfort zones** provided by **anatomically shaped inserts** around the heel and the metatarsus (insole version) and around the heel spur (heel insert version)
- **Antibacterial coating** (Cambrelle / Amicor™) for hygiene and comfort
- Reinforced heel support in the shoe through **non-slip pads**
- Sold in pairs
- Under-heel thickness: 8 mm

INSOLES	
1	37 - 39
2	40 - 41
3	42 - 43
4	44 - 46

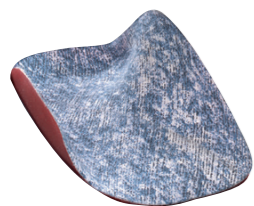
HEEL INSERTS	
1	36 - 39
2	40 - 46

Shoe size	Length
EUR	cm
35 - 36	22,3 - 23
37 - 38	23,7 - 24,3
39 - 40	25 - 25,7
41 - 42	26,3 - 27
43 - 44	27,7 - 28,3
45 - 46	29 - 29,7
47 - 48	30,3 - 31

INSOLES	
1	36 - 39
2	40 - 46

## Arch support for children

### Sohli T479841



- Increased comfort with **textile covering** on the foot side
- **Median calcaneus correction**
- Thin sides with no compression points
- Sold in pairs

Shoe size	Length
EUR	cm
19 - 20	10,7 - 11,3
21 - 22	12 - 12,7
23 - 24	13,3 - 14
25 - 26	14,7 - 15,3
27 - 28	16 - 16,7
28 - 30	17,3 - 18
31 - 32	18,7 - 19,3
33 - 34	20 - 20,7
35 - 36	21,3 - 22
37 - 38	22,7 - 23,3



INSOLES	
1	37 - 39
2	40 - 41
3	42 - 43
4	44 - 46

HEEL INSERTS	
1	36 - 39
2	40 - 46

# HEEL INSERTS

## Heel inserts



### Elastocalx N

T479801

- **Symmetrical**, flat ended without sides
- Adapts to fit all shoes
- Composition: silicon

Single right/left model

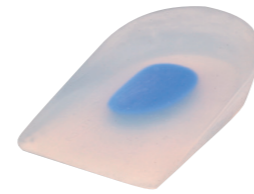


### Elastocalx S/P

T479811

- **Unilateral supination or pronation raising heel insert**
- Adapts to fit all shoes
- Composition: silicon

Models: right - left



### Elastocalx Plus

T479821

- **Soft zone at the heel spur**
- Composition: silicon

Models: right - left

Shoe size	Length
EUR	cm
0 XS 32-34	20,3-21,7
1 S 35-37	22,3-23,7
2 M 38-40	24,3-25,7
3 L 41-43	26,3-27,7
4 XL 44-46	27,3-30,7

Shoe size	Length
EUR	cm
0 XS 32-34	20,3-21,7
1 S 35-37	22,3-23,7
2 M 38-40	24,3-25,7
3 L 41-43	26,3-27,7
4 XL 44-46	28,3-29,7

Shoe size	Length
EUR	cm
0 XS 32-34	20,3-21,7
1 S 35-37	22,3-23,7
2 M 38-40	24,3-25,7
3 L 41-43	26,3-27,7
4 XL 44-46	28,3-29,7

## Foot lifter



### Pero-Med

T479722

- **Short brace**, extends above the malleoli
- Its design allows it to be discreetly inserted into the shoe

Models: right - left



### Pero-Med AFO III/II

T479652

- **Effective right-angle foot support** to secure the walking motion
- Extra comfort thanks to its **anatomical shape** and **light weight**
- Its design allows it to be worn with all types of flat shoe

Models: right - left

1	31 - 32
2	33 - 34
3	35 - 37
4	38 - 40
5	41 - 43
6	44 - 46
7	47 - 49

S	35 - 37
M	37 - 39
L	39 - 41
XL	41 - 44

## Brace for congenital malposition of the foot



### Elastocalx Flex

T479911

- **Honeycomb structure around the heel**
- Adapts to fit all shoes
- Composition: silicon

Single right/left model



### Peducy

T478501

- Therapeutic boot splint allowing **accurate visual monitoring** of correction (foot position)
- **Individual positioning** of pressure points
- **Correction pivot** adapted to the shape of the foot
- Continuous adjustment of correction force
- Individual fit due to the thermomouldable material

Models: right - left

Shoe size	Length
EUR	cm
0 XS 32-34	20,3-21,7
1 S 35-37	22,3-23,7
2 M 38-40	24,3-25,7
3 L 41-43	26,3-27,7
4 XL 44-46	28,3-29,7

85	75 - 95 mm
100	90 - 110 mm
115	105 - 125 mm
130	120 - 140 mm



### Pero-Med Adapt

T479601

- Effective right-angle foot support to secure the walking motion
- Extra comfort provided by the sliding strap, avoiding irritation
- Morphological fit due to the thermomouldable plastic
- Its design allows it to be discreetly inserted into the shoe

Models: right - left

S	35 - 37
M	37 - 39
L	39 - 41
XL	41 - 44



### Hallux Pro Night

T479302

- Extra comfort thanks to its **light weight** and **anatomical shape**
- Simple to use thanks to the **Velcro fastening** which allows for a better morphological adjustment
- For night-time use, not recommended for walking

Models: right - left

Shoe size	Length (cm)
S	< 38 < 24,3
M	38-41 24,3-26,3
L	> 41 > 26,3

# OFFLOADING SHOES

## Heel offload shoes



### Podo-Med T500501

- **Integrated plantar sole**, adjustable by moulding
- **Seamless interior** avoiding pressure zones
- **Fitting and treatment made easy** by its complete opening and Velcro strap adjustment

	Shoe size	Foot length
<b>S</b>	35 - 37	22 - 23 cm
<b>M</b>	38 - 40	24 - 25 cm
<b>L</b>	41 - 43	26 - 27 cm
<b>XL</b>	44 - 46	28 - 29 cm



### Podo-Med T500511

- Same as the Podo-med T500501 model but with **a removable heel cap** with **additional reinforcement** of the back of the foot

	Shoe size	Foot length
<b>S</b>	35 - 37	22 - 23 cm
<b>M</b>	38 - 40	24 - 25 cm
<b>L</b>	41 - 43	26 - 27 cm
<b>XL</b>	44 - 46	28 - 29 cm

## Front-foot offload shoes



### Podo-Med T500451

- Wedge shaped base with **dorsal flexion at 10°**
- **Extended sole** to protect the foot
- **Rounded heel** for safe comfortable walking
- **Seamless interior** avoiding pressure zones

	Shoe size	Foot length
<b>XS</b>	32 - 34	20 - 21 cm
<b>S</b>	35 - 37	22 - 23 cm
<b>M</b>	38 - 40	24 - 25 cm
<b>L</b>	41 - 43	26 - 27 cm
<b>XL</b>	44 - 46	28 - 29 cm



### Podo-Med T500471

- Wedge shaped base with **dorsal flexion at 10°**
- **Extended sole** and **end of foot fitting** with Velcro strap
- **Rounded heel** for safe comfortable walking
- **Seamless interior** avoiding pressure zones

	Shoe size	Foot length
<b>XS</b>	32 - 34	20 - 21 cm
<b>S</b>	35 - 37	22 - 23 cm
<b>M</b>	38 - 40	24 - 25 cm
<b>L</b>	41 - 43	26 - 27 cm
<b>XL</b>	44 - 46	28 - 29 cm

## Front-foot offload shoes



### Podo-Med T500301

- Wedge shaped base with **dorsal flexion at 10°**
- **Rounded heel** for safe comfortable walking
- **Seamless interior** avoiding pressure zones

	Shoe size	Foot length
<b>S</b>	35 - 37	22 - 23 cm
<b>M</b>	38 - 40	24 - 25 cm
<b>L</b>	41 - 43	26 - 27 cm
<b>XL</b>	44 - 46	28 - 29 cm



### Podo-Med T500401

- Wedge shaped base with **dorsal flexion at 10°**
- **Extended sole** and **toe protection edge**
- **Rounded heel** for safe comfortable walking
- **Seamless padding** avoiding pressure zones

	Shoe size	Foot length
<b>XS</b>	32 - 34	20 - 21 cm
<b>S</b>	35 - 37	22 - 23 cm
<b>M</b>	38 - 40	24 - 25 cm
<b>L</b>	41 - 43	26 - 27 cm
<b>XL</b>	44 - 46	28 - 29 cm

## Shoes for bandaged feet



### Podo-Med T500601

- **Shoe for bandaged feet with additional strap**
- End of foot fitting with Velcro strap
- **Rounded heel** for safe comfortable walking
- **Seamless interior** avoiding pressure zones

T500461: Velcro insole

	Shoe size	Foot length
<b>XS</b>	32 - 34	20 - 21 cm
<b>S</b>	35 - 37	22 - 23 cm
<b>M</b>	38 - 40	24 - 25 cm
<b>L</b>	41 - 43	26 - 27 cm
<b>XL</b>	44 - 46	28 - 29 cm



### Podo-Med T500651

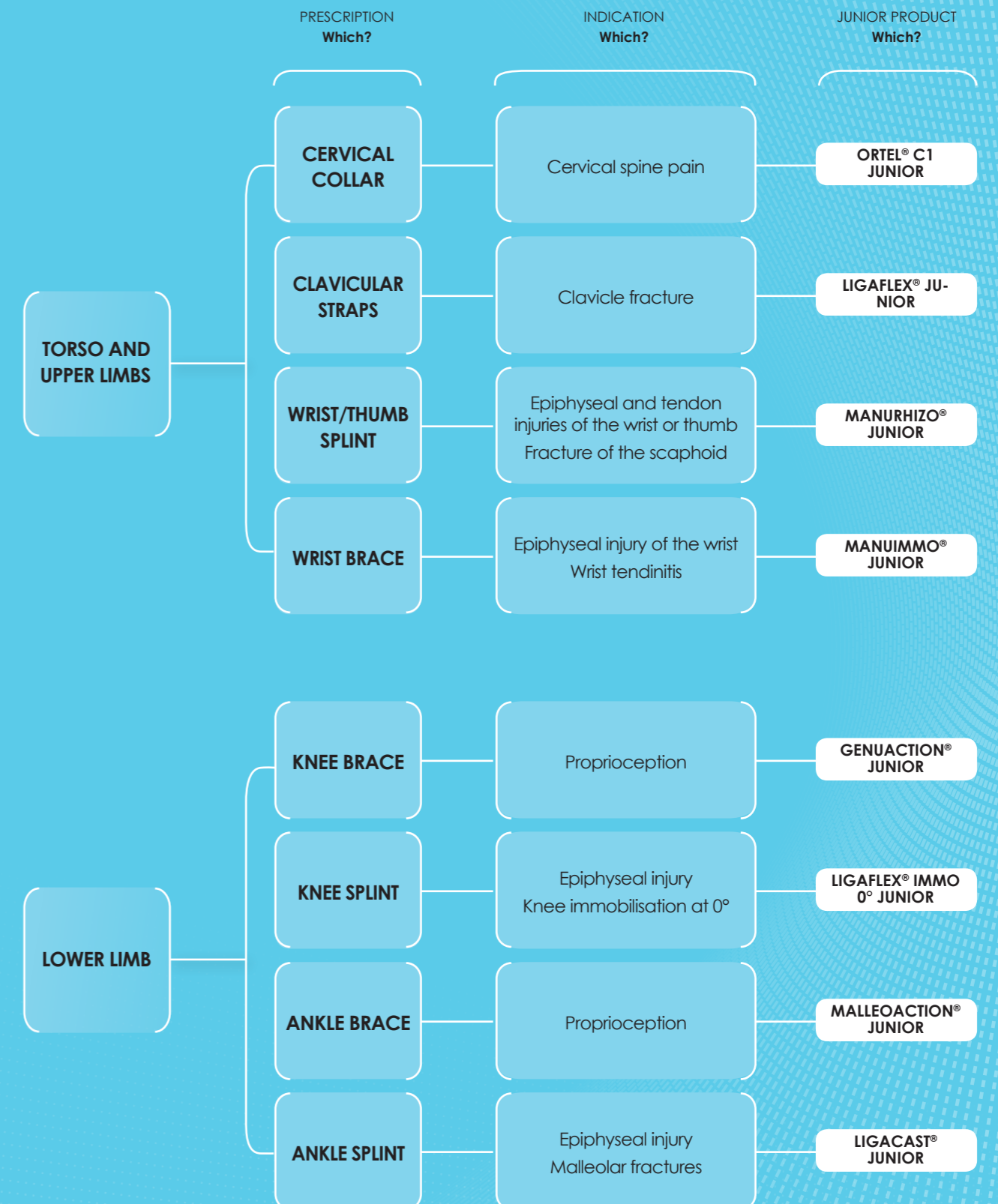
- **Shoe for bandaged feet with toe-protection rim**
- Toe-protection rim
- **Rounded heel** for safe comfortable walking
- **Seamless interior** avoiding pressure zones

T500371: Velcro protection cap

	Shoe size	Foot length
<b>XS</b>	32 - 34	20 - 21 cm
<b>S</b>	35 - 37	22 - 23 cm
<b>M</b>	38 - 40	24 - 25 cm
<b>L</b>	41 - 43	26 - 27 cm
<b>XL</b>	44 - 46	28 - 29 cm



# JUNIOR RANGE



## Neck

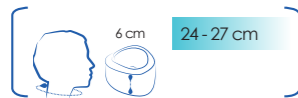


### Ortel® C1 JUNiOR

2620 001 004

#### Soft cervical collar

- Removable rigid insert for adjustable support
- Precise velcro adjustment



## Shoulder



### Ligaflex® clavicular straps JUNiOR

2640 01

#### Clavicular immobilisation straps

- Secure immobilisation thanks to a cutting system for adjustment to the child's size (shoulder width less than 34 cm)
- Dorsal foam anchoring pad for optimum comfort
- Velcro fitting system and buckle fastening



## Wrist



### Manurhizo® JUNiOR

2630 02

#### Wrist and thumb immobilisation splint

- Firm support for the thumb and wrist thanks to the 2 anatomical stays, which are conformable and radio-transparent (palm and thumb column)
- Comfortable with its foam-lined inner fabric
- 4 velcro tightening straps for easy fitting and removal

2 models: right and left



### Manuimmo® JUNiOR

2635 02

#### Wrist immobilisation splint

- Firm wrist support thanks to the radio-transparent conformable, anatomically-shaped palm stay
- 4 velcro tightening straps for easy fitting and removal

2 models: right and left



## Knee



### Genuaction® JUNiOR

2615 01

#### Elastic compressive knee support

- Support and proprioception provided by the elastic compressive knit (approximately 23 mmHg)
- Anatomically-shaped knit with comfort zones over the kneecap and behind the knee



### Ligaflex® Immo 0° JUNiOR

2610 001 004

#### Knee immobilisation splint at 0°

- Immobilisation provided by 4 radio-transparent conformable stays
- Velcro tightening straps for better support



## Ankle



### Malleoaction® JUNiOR

2625 01

#### Elastic compressive ankle support

- Support and proprioception provided by the elastic compressive knit (approximately 22.5 mmHg)
- Anatomically-shaped knit, comfort zone over the malleoli and patented pull tabs

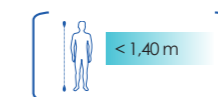


### Ligacast® JUNiOR

2600 001 004

#### Stabilising ankle brace with foam inserts

- Firm support for the ankle thanks to 2 rigid side shells
- Adjustment to fit the child's anatomy: height-adjustable heel strap, precise velcro adjustment of straps
- Comfortable thanks to the foam inserts





# THUASNE



THUASNE UK

Wildmere Road - Banbury - Oxfordshire - OX16 3JU

Tel. 01295 257422 - Fax 01295 257877

e-mail : [orders@thuasne.co.uk](mailto:orders@thuasne.co.uk)

[www.thuasne.com](http://www.thuasne.com)

Ref. 0116 092 028 - 12 (Oct. 2015)

We reserve the right to modify our products as shown and described in this catalogue, without previous notice. Non-contractual photographs

